



**Training Manual**  
**PROFINET IO Controller**  
**CIFX, COMX and netJACK - Configuration and Testing - Step by Step**

**Hilscher Gesellschaft für Systemautomation mbH**  
**[www.hilscher.com](http://www.hilscher.com)**

DOC121001TM02EN | Revision 2 | English | 2012-12 | Released | Public

# Table of Contents

1	INTRODUCTION .....	3
1.1	About this Training Manual .....	3
1.2	Required Hardware and Software .....	3
1.3	List of Revisions .....	3
2	GENERAL PROCEDURE .....	4
3	NETWORK SETUPS .....	5
3.1	Setup 1: CIFS 50-RE with NXIO 50-RE .....	5
3.2	Setup 2: CIFS 50-RE Added as Second Slave .....	5
4	STEP-BY-STEP CONFIGURATION .....	6
4.1	Setup 1: CIFS 50-RE with NXIO 50-RE .....	6
4.1.1	Set Up Network .....	6
4.1.2	Assign Hardware and Load Firmware .....	9
4.1.3	Configure Slave .....	13
4.1.4	Configure Hilscher Stand-Alone Slave .....	15
4.1.5	Configure Master .....	16
4.1.6	Diagnosis and Testing .....	23
4.2	Setup 2: Add CIFS 50-RE as Second Slave .....	29
4.2.1	Set Up Network .....	29
4.2.2	Assign Hardware and Load Firmware .....	29
4.2.3	Configure Slave .....	30
4.2.4	Configure Hilscher Stand-Alone Slave .....	32
4.2.5	Configure Master .....	40
4.2.6	Diagnosis and Testing .....	47
5	TIPS AND TRICKS .....	53
5.1	Checking, Setting and Reordering a License .....	53
5.2	Automated Scanning of the Network Structure .....	54
5.3	Setting Station Name and IP Address of PROFINET Devices .....	56
6	CONTACTS .....	59

# 1 Introduction

## 1.1 About this Training Manual

This document provides step-by-step instructions on how to commission and configure a PROFINET IO Controller (master) by using the *SYCON.net* configuration software. How to read input data and how to write output data by using the I/O monitor is described for the *SYCON.net* configuration software and the *cifX Test* auxiliary tool.

The procedures are exemplified by using a *cifX* PC card. They can, however, also be applied to the *comX* and *netJACK* communication modules.

## 1.2 Required Hardware and Software

Prerequisite for the described commissioning and configuration example is a proper installation of all necessary hardware and software components.

For the example given in this document, you need the following components:

### Hardware

- 1 x PC with standard equipment: monitor, keyboard, mouse, DVD drive, PCI slot
- 1 x CIFS 50-RE acting as Real-Time Ethernet master (requires master license)
- 1 x NXIO 50-RE Real-Time Ethernet slave with power supply unit
- 1 x CIFS 50-RE acting as Real-Time Ethernet slave
- 2 x Ethernet cable (CAT5)

### Software

- *SYCON.net* configuration software
- Driver for *cifX* PC card (*cifX Device Driver*)
- Auxiliary tools *cifX Test* and *cifX Setup* (included in the *cifX Device Driver* installation)
- *Ethernet Device Configuration* (included in the *SYCON.net* installation)



For details about how to install the necessary hardware and software components, please refer to the user manual of the respective product.

## 1.3 List of Revisions

Index	Date	Chapter	Revision
2	2012-12-04	all	created

## 2 General Procedure

Set up network	1.1	Create new project in <b>SYCON.net</b> .	<i>Note:</i> <i>Hardware has not been assigned yet.</i> <i>Firmware has not been loaded yet.</i> <i>Network has not been configured yet.</i>
	1.2	Insert Hilscher master device in network (e. g. <b>CIFX 50-RE</b> ).	
	1.3	If a non-Hilscher device is used as slave: import device description file first. Add slave to network (e. g. <b>NXIO 50-RE</b> ).	
	1.4	If a full-scale Hilscher slave device is used (e. g. <b>CIFX 50-RE</b> ), add also a Stand-Alone Slave.	
Assign hardware and load firmware	2.1	Open <b>Configuration window</b> for <b>master</b> device.	<i>Note:</i> <i>Hardware has been assigned.</i> <i>Firmware has been loaded.</i> <i>Network has not been configured yet.</i>
	2.2	<b>Select driver</b> for accessing the master device. Internal device driver → select CIFX Device Driver. External via Serial, USB or TCP/IP → select netX Driver.	
	2.3	Scan for connected hardware and <b>assign device</b> .	
	2.4	If PC cards are used: <b>Select and load Firmware</b> .	
Configure slave	3.1	Open <b>Configuration window</b> for <b>slave</b> device.	<i>Note:</i> <i>Slave has been configured in network.</i> <i>Real station address has been set for slave by rotary switch.</i>
	3.2	Configure <b>Address</b> (e. g. station name, IP address). If a non-Hilscher slave is used: set real station address, e. g. by rotary switch.	
	3.3	Configure <b>I/O data</b> , i.e. modules and lengths.	
Configure Hilscher Stand-Alone Slave	4.1	Open <b>Configuration window</b> for <b>Stand-Alone Slave</b> .	<i>Note:</i> <i>Hardware has been assigned to full-scale slave, firmware has been loaded and real station address has been set.</i>
	4.2	<b>Assign hardware and load firmware</b> .	
	4.3	Configure <b>address, I/O data</b> . These must match the network configuration. <b>Set real station address of the Hilscher slave device.</b> (e. g. by SYCON.net or Ethernet Device Configuration, etc.)	
	4.4	<b>Download configuration</b> to Stand-Alone Slave.	
Configure master	5.1	Open <b>Configuration window</b> for <b>master</b> .	<i>Note:</i> <i>Network has been completely configured and can be used.</i>
	5.2	Configure <b>Controller address</b> .	
	5.3	Configure <b>station names</b> of the slaves. These must match the slave.	
	5.4	Configure <b>IP addressing</b> of the slaves. These must match the slave.	
	5.5	Configure <b>I/O data</b> . These must match the slaves.	
	5.6	Configure <b>master and further settings</b> .	
	5.7	<b>Download configuration</b> to master.	
Diagnosis	6.1	Establish connection to master and open <b>Diagnosis</b> dialog.	<i>Note:</i> <i>Payload data is exchanged.</i>
	6.2	Use <b>General Diagnosis</b> to check state of the network.	
	6.3	Use <b>I/O Monitor</b> to test the communication.	
	6.4	Use <b>cifX Test</b> auxiliary tool to test the communication.	

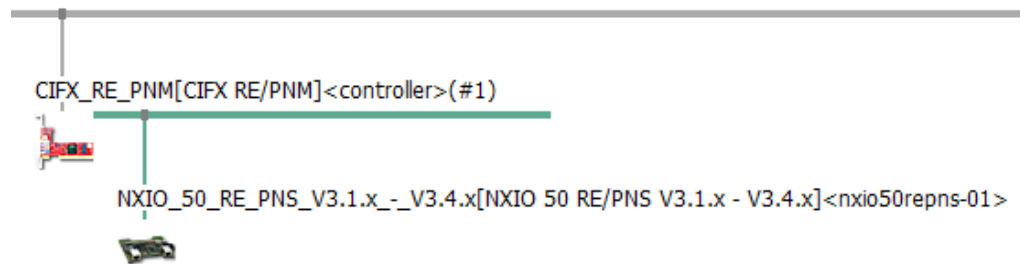
## 3 Network Setups

### 3.1 Setup 1: CIFX 50-RE with NXIO 50-RE

Setup 1 is a network consisting of a PROFINET IO Controller (master) and an IO Device (Slave).

**Master:** CIFX 50-RE\ML by Hilscher  
(flexible Real-Time Ethernet PCI card)

**Slave 1:** NXIO 50-RE by Hilscher  
(simple Real-Time Ethernet test slave)



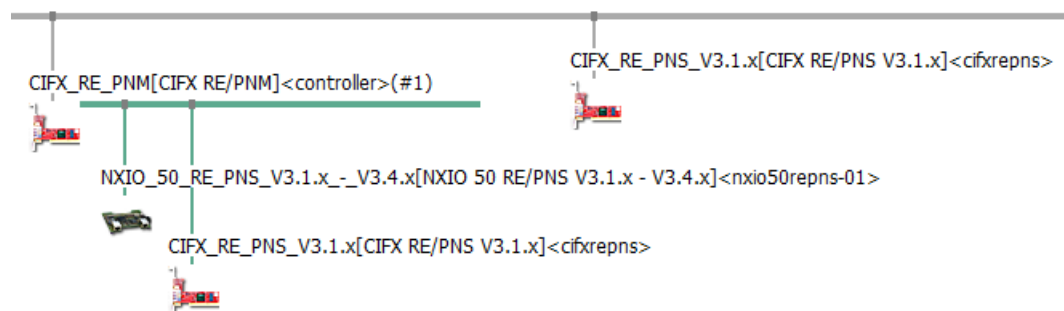
### 3.2 Setup 2: CIFX 50-RE Added as Second Slave

Setup 2 is a network consisting of a PROFINET IO Controller (master) and two IO Devices (slaves).

**Master:** CIFX 50-RE\ML by Hilscher  
(flexible Real-Time Ethernet PCI card)

**Slave 1:** NXIO 50-RE by Hilscher  
(simple Real-Time Ethernet test slave)

**Slave 2:** CIFX 50-RE by Hilscher  
(flexible Real-Time Ethernet PCI card)

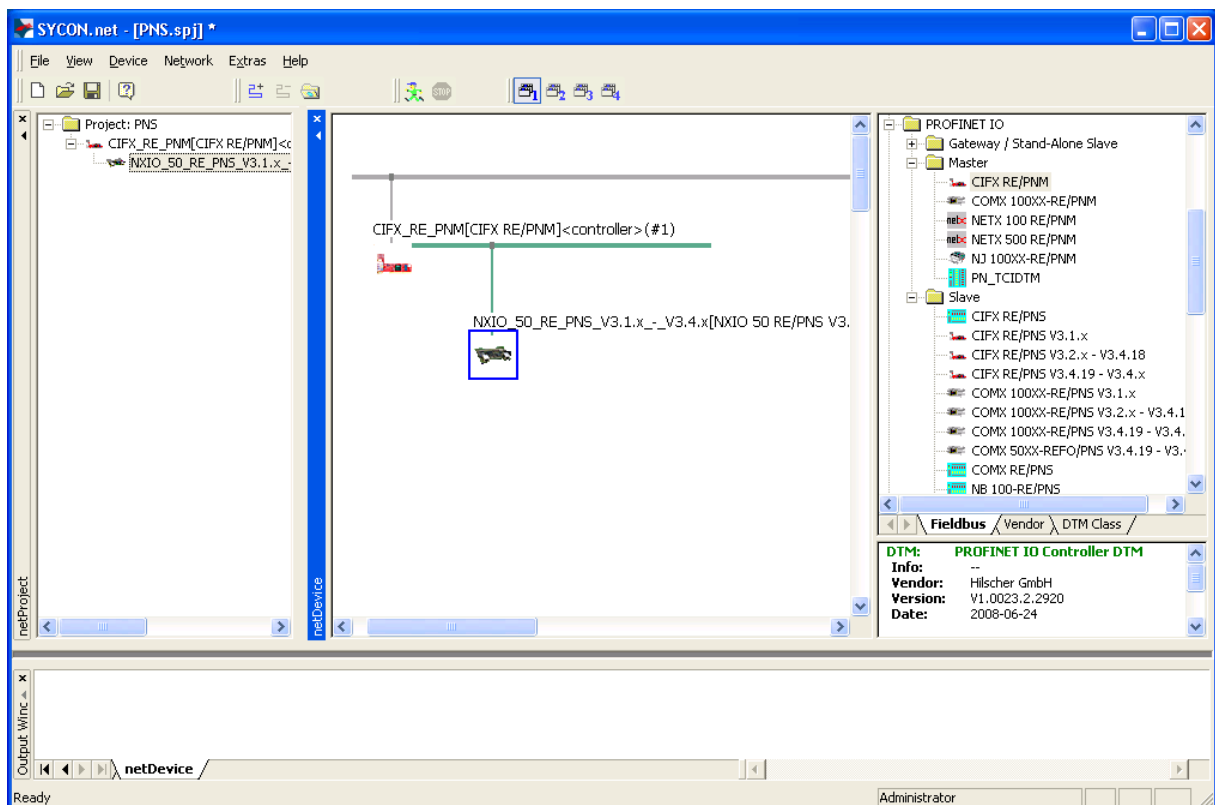


## 4 Step-By-Step Configuration

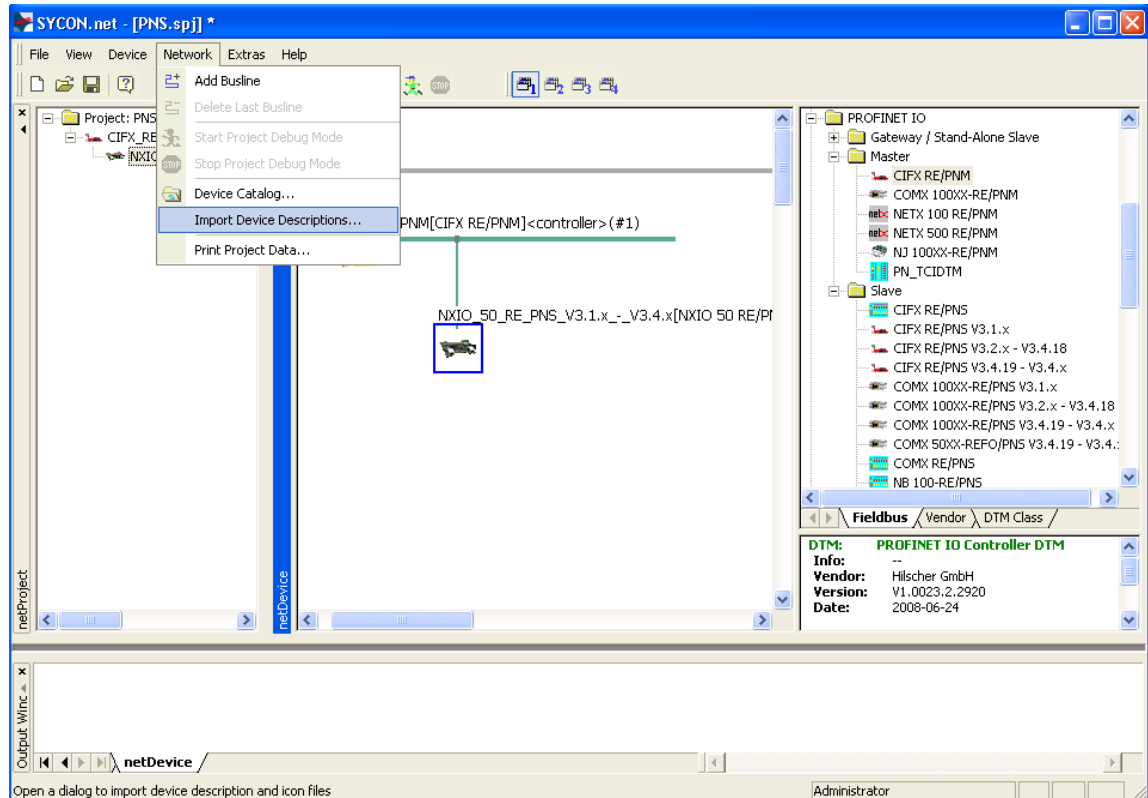
### 4.1 Setup 1: CIFS 50-RE with NXIO 50-RE

#### 4.1.1 Set Up Network

1. Create a new project in SYCON.net.
  - In SYCON.net, choose **File > New**.
2. Insert Hilscher PROFINET IO Controller device in network.
  - Select a **CIFS RE/PNM** from the **Device Catalog (Master)** and drag and drop it onto the upper line.
3. Add PROFINET IO device to network.
  - Select a **NXIO 50-RE** from the **Device Catalog (Slave)** and drag and drop it onto the PROFINET network line.



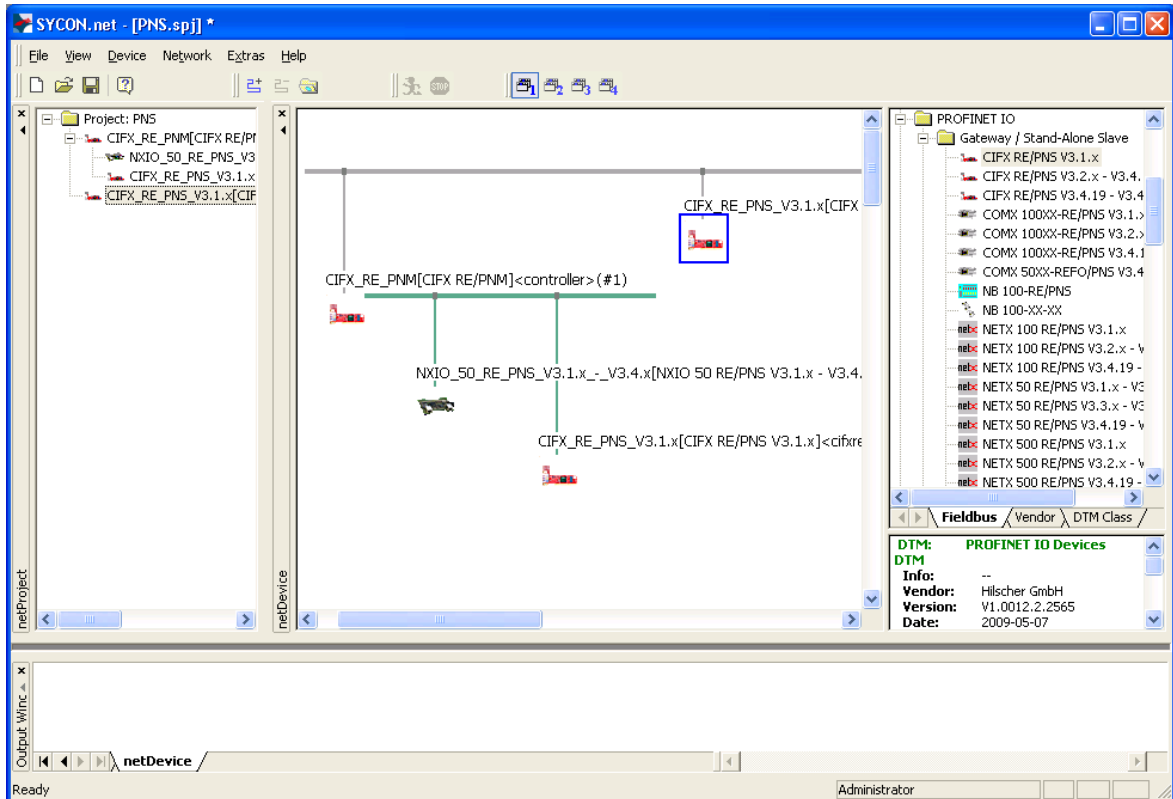
- If PROFINET IO devices of other manufacturers are used, a device description file has to be imported first, so that the slave device will be displayed in the **Device Catalog**.
- To import the device description file, choose **Network > Import Device Descriptions...** in the SYCON.net menu.





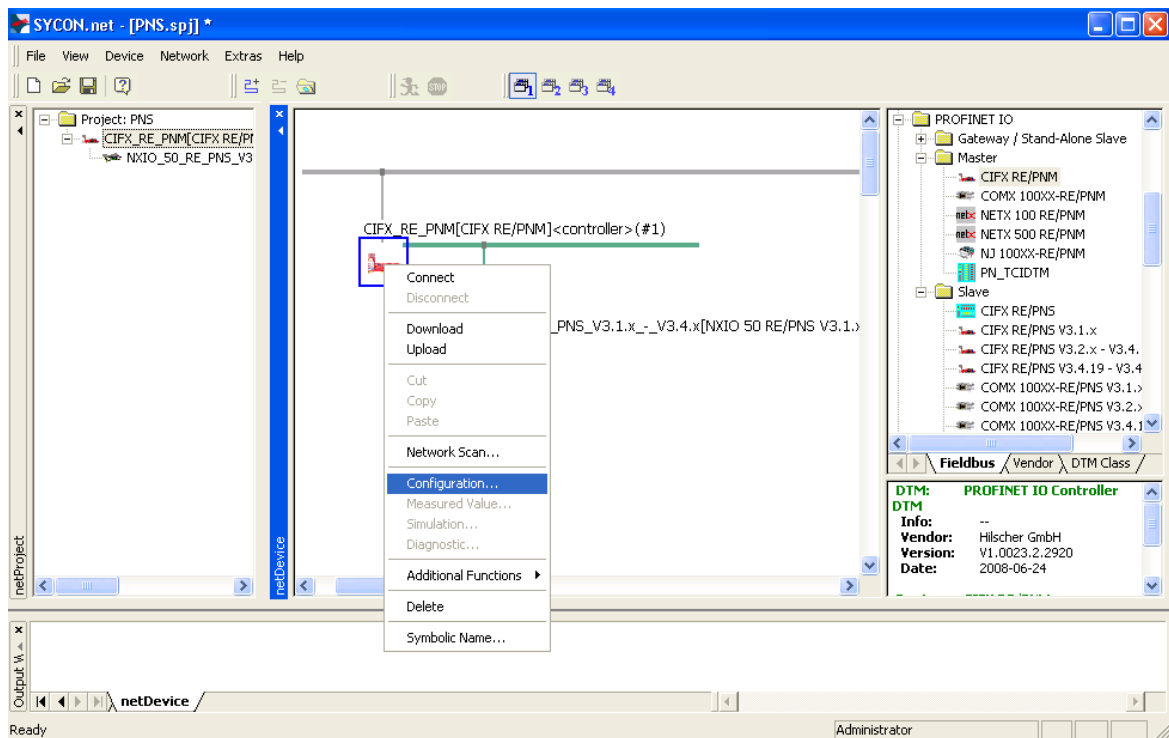
**Note:** Skip the following step, because it does not need to be performed for Setup 1.

4. If a full-scale Hilscher PROFINET IO device is used, place also the corresponding Stand-Alone Slave in the network.
  - Select a **CIFX RE/PNS** from the **Device Catalog (Gateway/Stand-Alone Slave)** and drag and drop it onto the PROFINET network line.



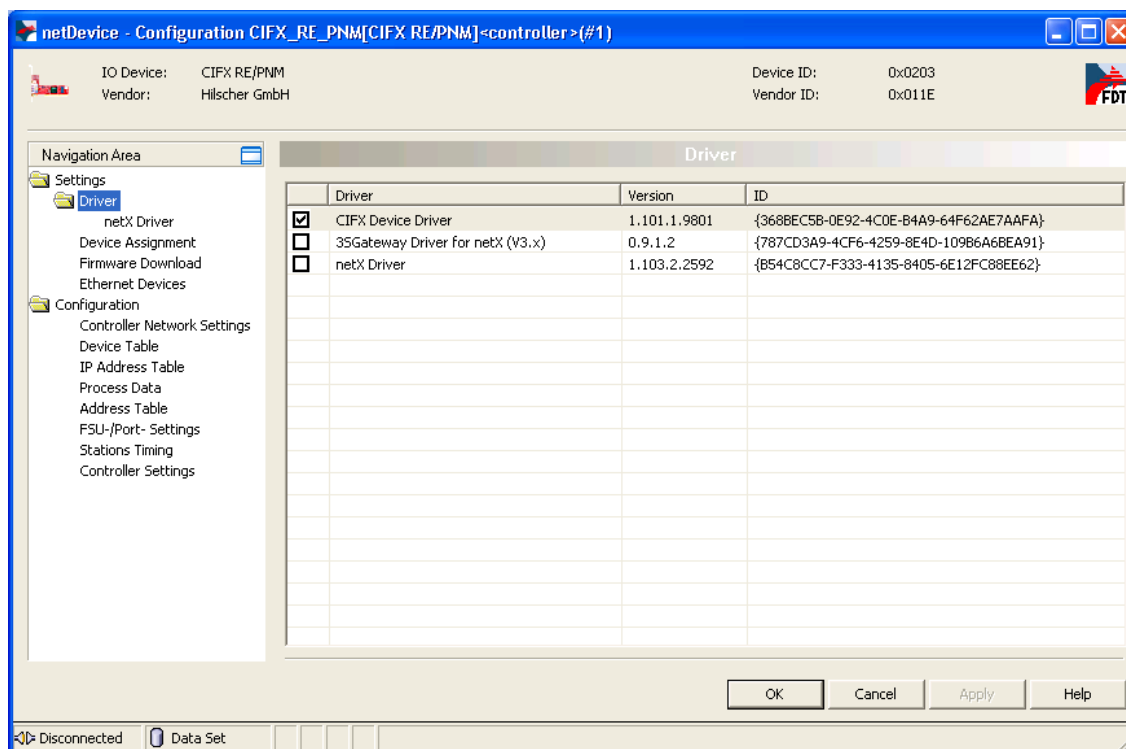
## 4.1.2 Assign Hardware and Load Firmware

1. Open Configuration window for **CIFX RE/PNM** master.
  - Right-click on the master device to open the context menu, then choose **Configuration...**



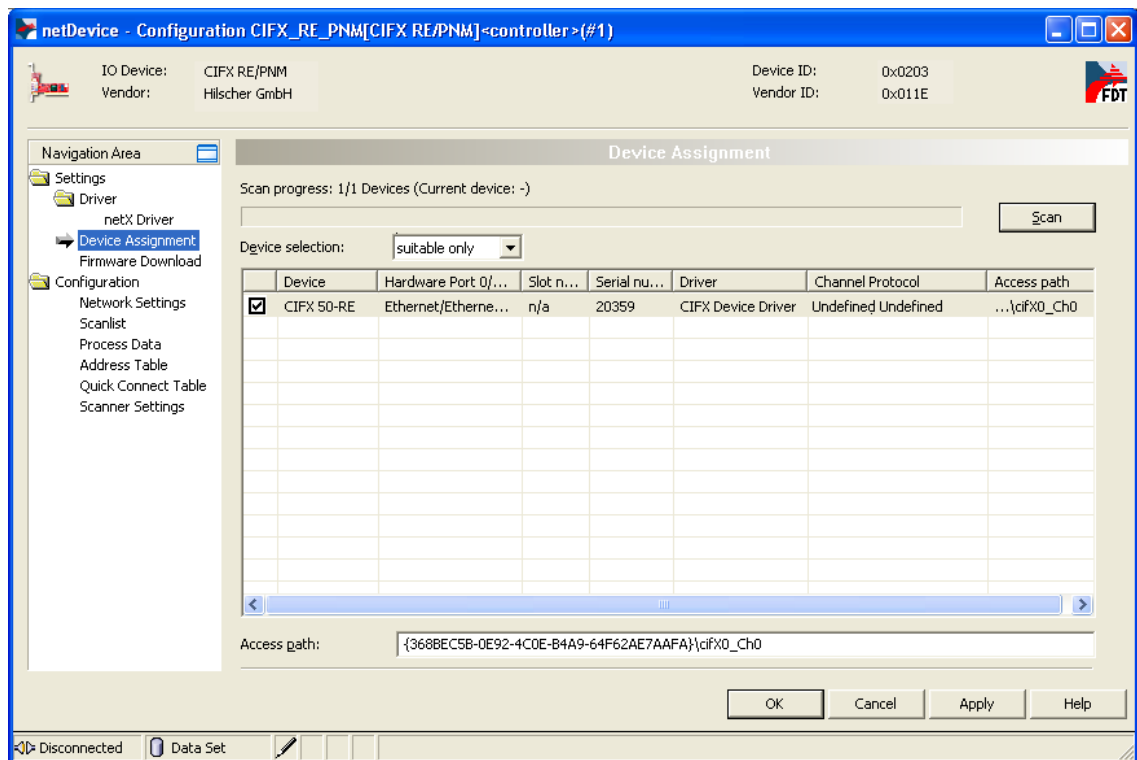
2. Select driver for accessing the master device.
  - In the **Navigation Area**, choose **Settings > Driver**, then select the appropriate driver.

In case of access via RS-232, USB or TCP/IP – i. e. via netX Driver – additional configurations are possible under **Settings > Driver > netX Driver**.



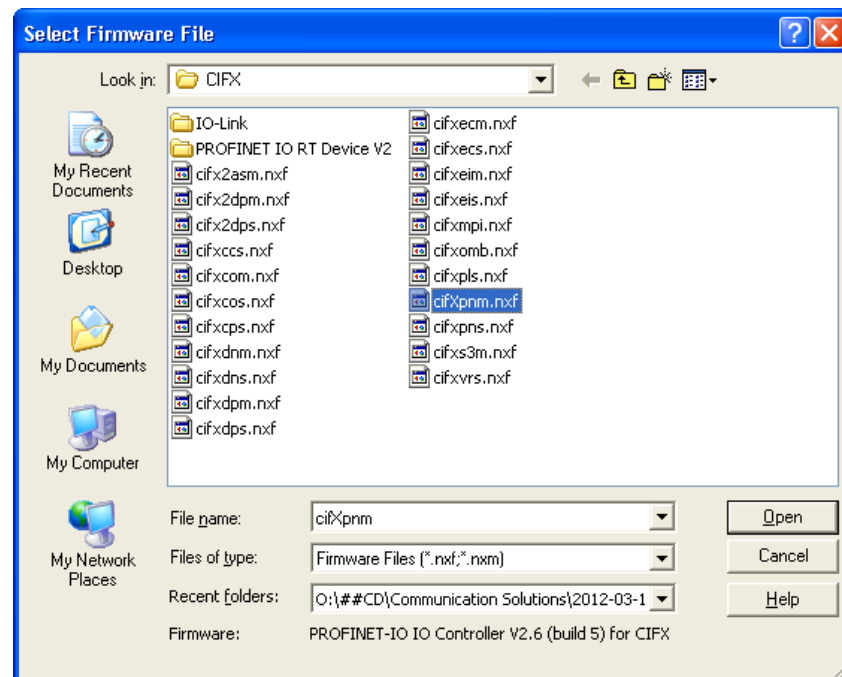
3. Scan for connected hardware and assign device.

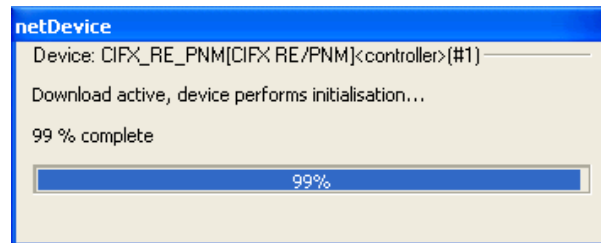
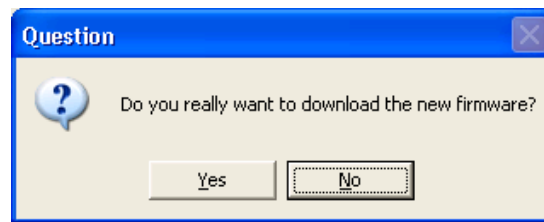
- In the **Navigation Area**, choose **Settings > Device Assignment** and scan for available Hilscher devices. Click **Scan** button.
- Choose the **CIFX 50-RE** device by activating the check box ☒.



4. In case of PC cards: Select and load firmware.

- In the **Navigation Area**, choose **Settings > Firmware Download**, then select the appropriate firmware: **cifxpmn.nxf**.
- Click **Open** button to load firmware into the PC card.

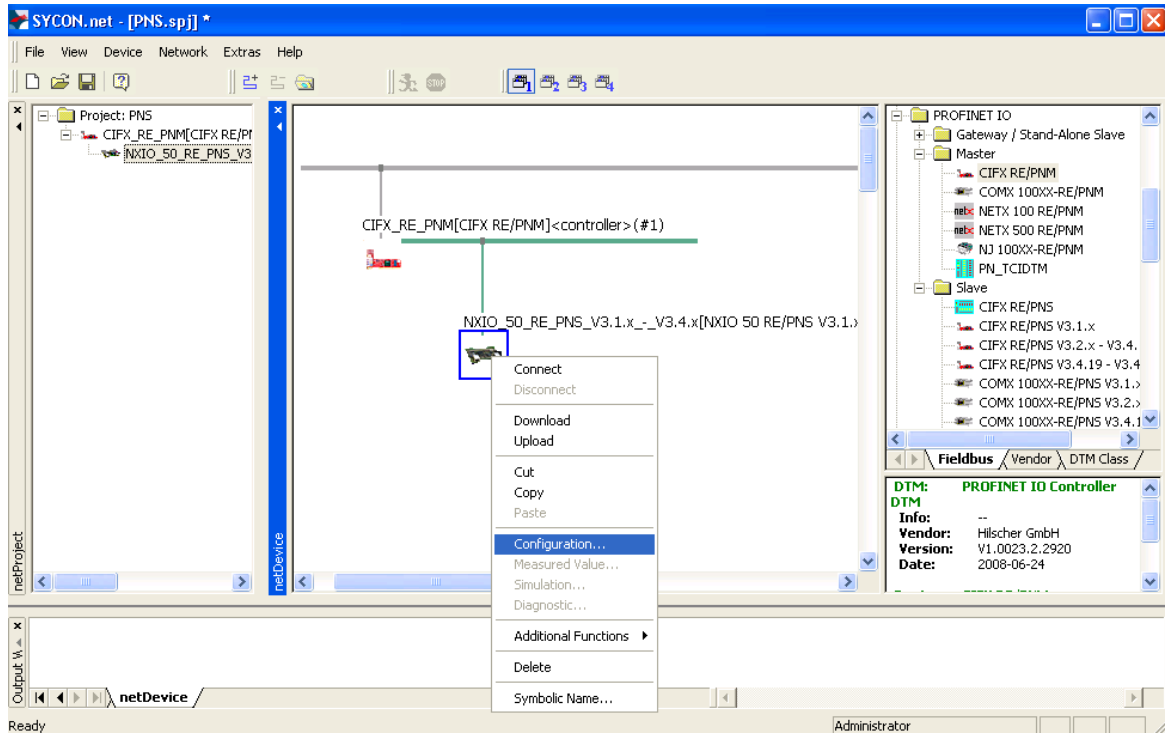




**Note:** Click **OK** to finally confirm the assignment of the PC card and the download of the firmware.

### 4.1.3 Configure Slave

1. Open Configuration window for **NXIO 50-RE** slave.
  - Right-click on the slave device to open the context menu and choose **Configuration**.



2. Configure address.

- **Use the rotary switch on the NXIO 50-RE to set the real station name** (e. g. nxio50repns-01).



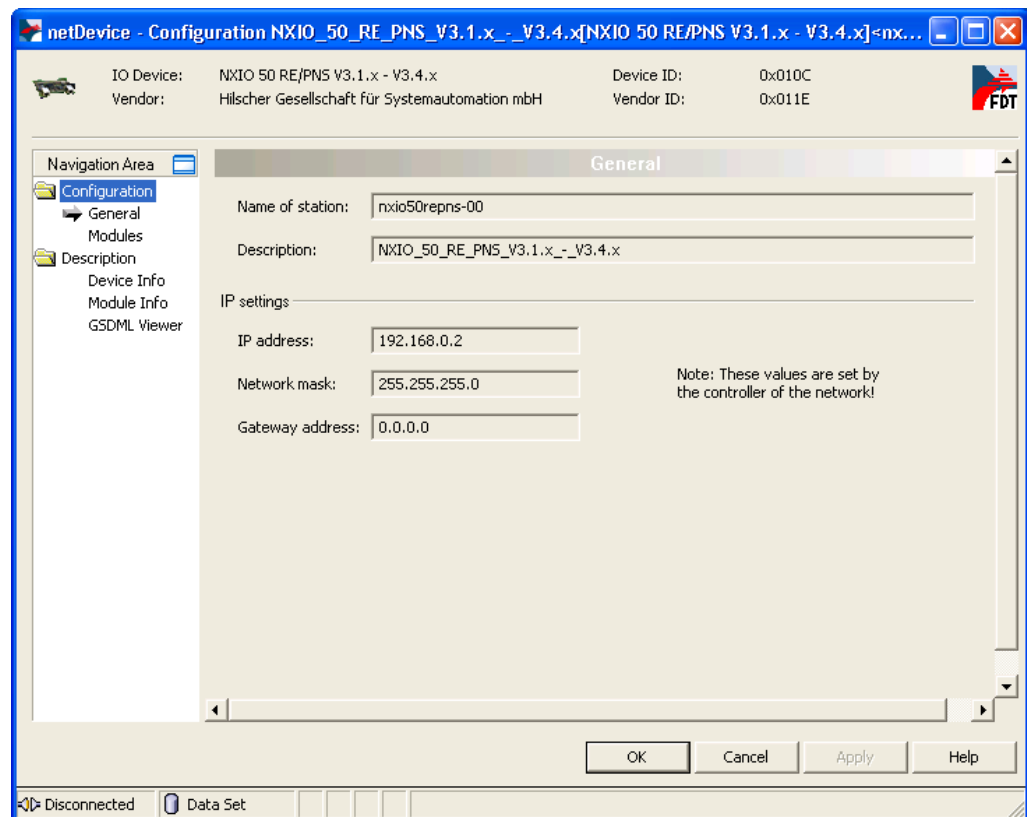
**Note:** The station name and the IP address of the NXIO 50-RE in the network, which are displayed under **Configuration > General**, can be adjusted via the master.



**Note:** In PROFINET IO, unequivocal addressing takes place via the station name, not via the IP address. Nonetheless, correct IP addressing – set in the master configuration – is necessary.

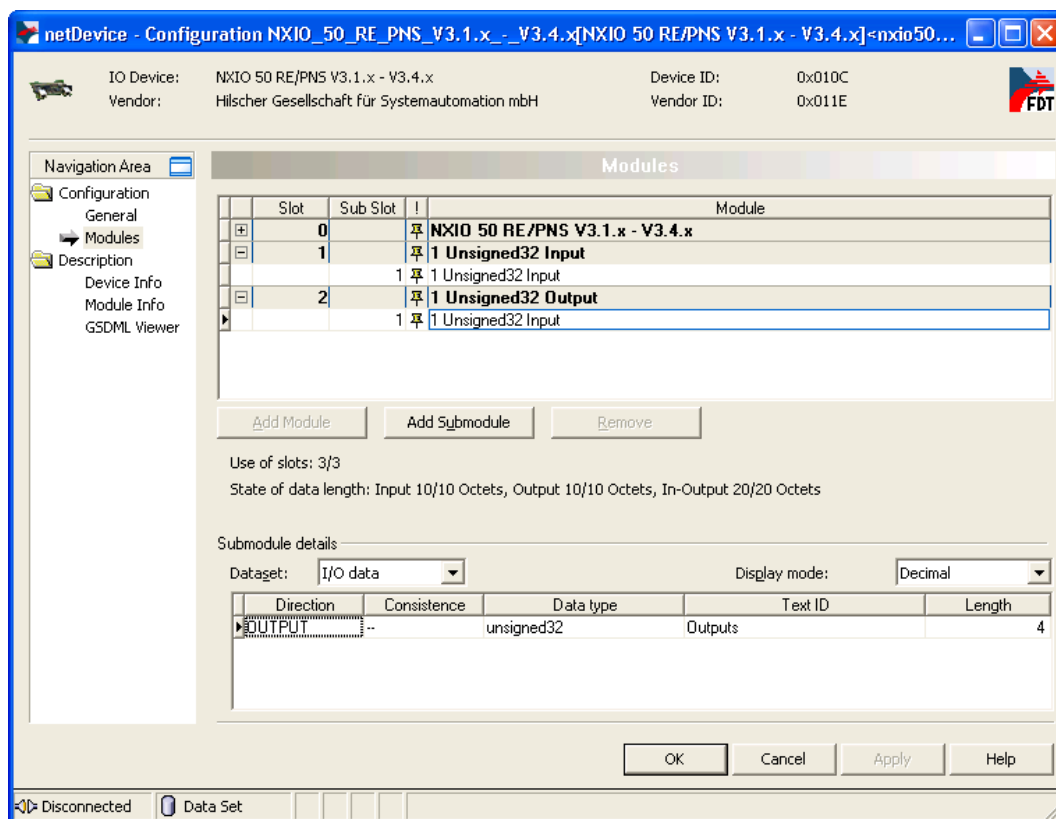


**Note:** The real station name and the IP address of full-scale Hilscher slaves can be set via Stand-Alone Slave, Hilscher master or by using the Ethernet Device Configuration tool.



### 3. Configure I/O Data.

The quantity of the I/O Data which is displayed under **Configuration > Modules** is preconfigured for the NXIO 50-RE and can not be changed.



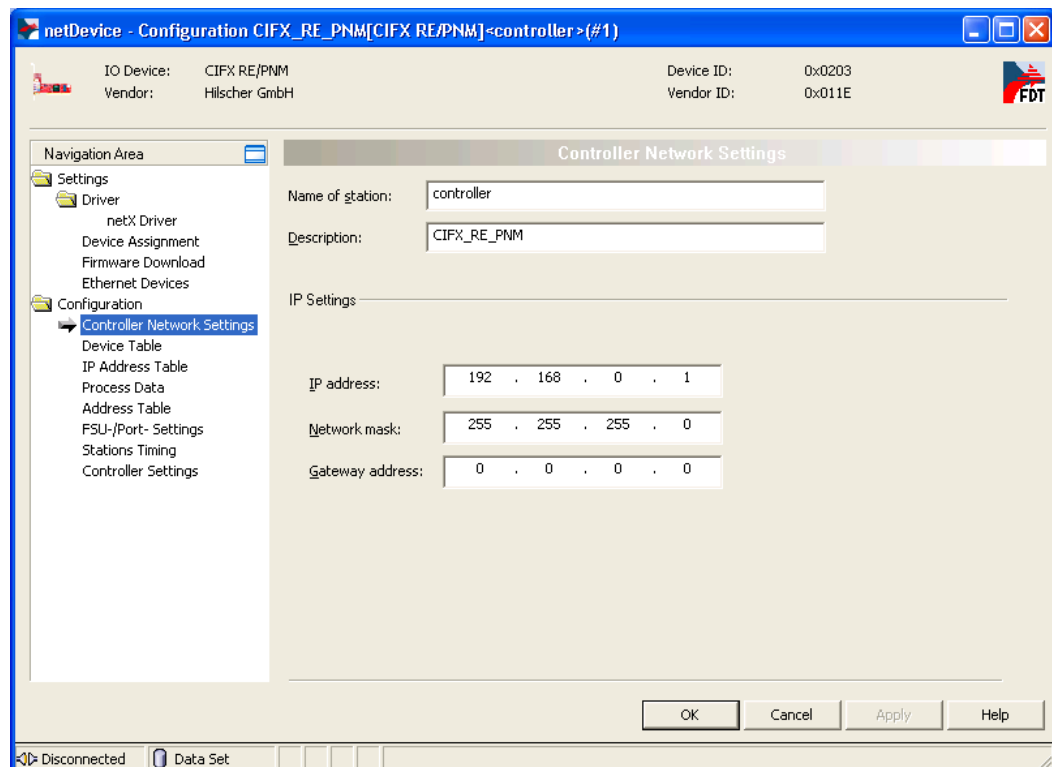
#### 4.1.4 Configure Hilscher Stand-Alone Slave



**Note:** It is not necessary to configure a Hilscher Stand-Alone Slave for this example.

## 4.1.5 Configure Master

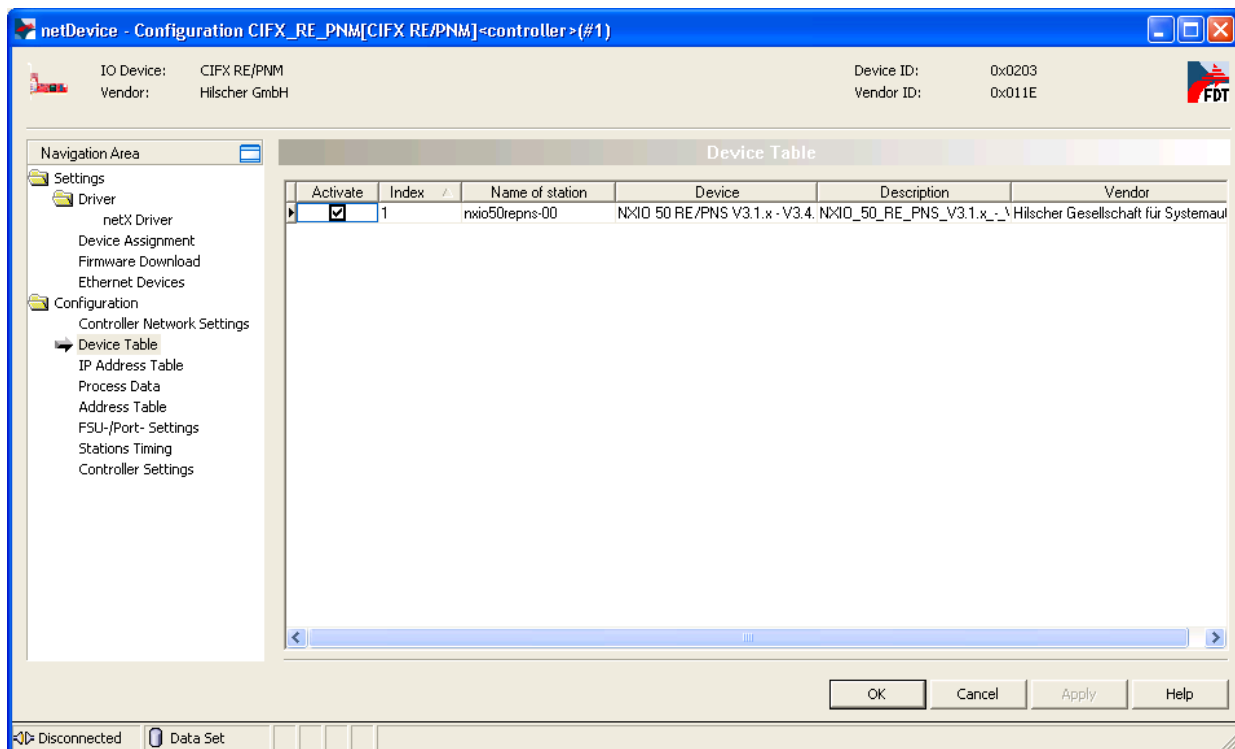
1. Open Configuration window for **CIFX RE/PNM** master.
  - Right-click on the master device to open the context menu, then choose **Configuration**.
2. Configure Controller address.
  - In the **Navigation Area**, choose **Configuration > Controller Network Settings**, then set the station name and the IP address.



3. Configure station name of the slave.
  - In the **Navigation Area**, choose **Configuration > Device Table**, then set the station name of the slave.
  - In the **Device Table** window, activate the slave with which the master shall communicate.



**Note:** The station name of the slave must be identical with the set real station name. On the NXIO 50-RE, the name is set by using the rotary switch (e.g. nxio50repns-01).

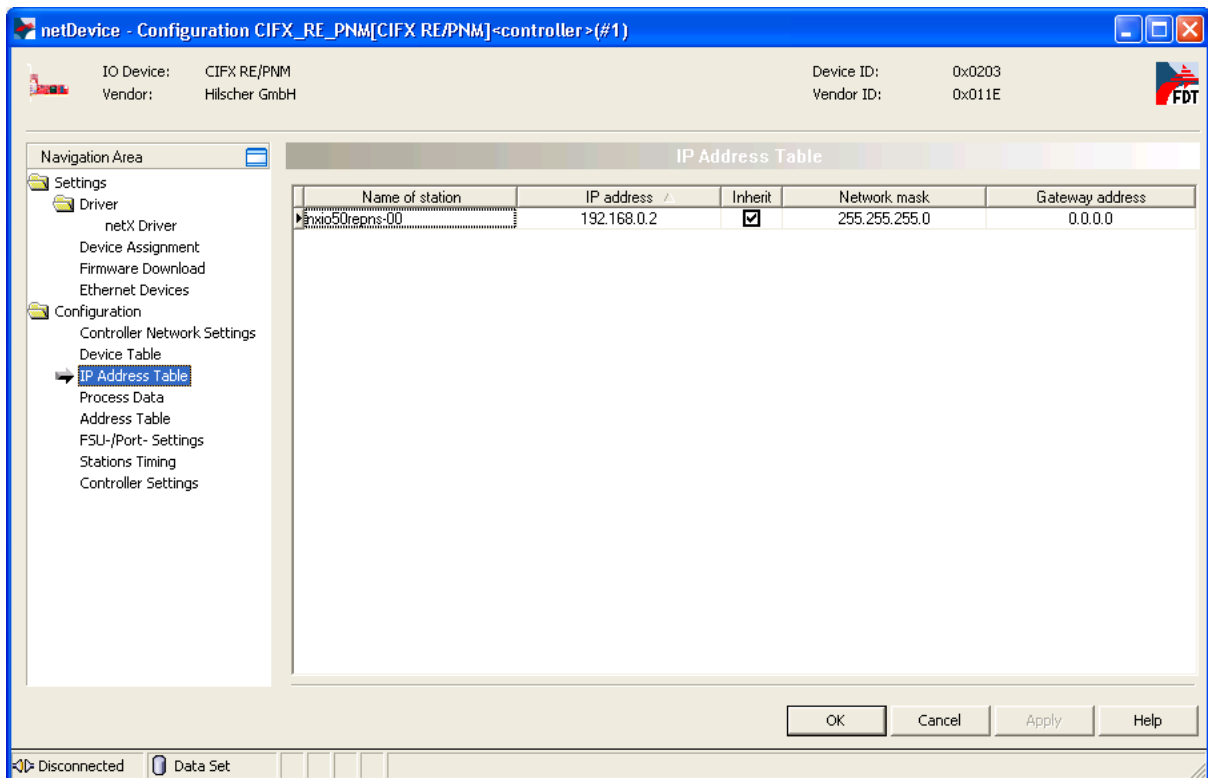


4. Configure IP address of the slave.

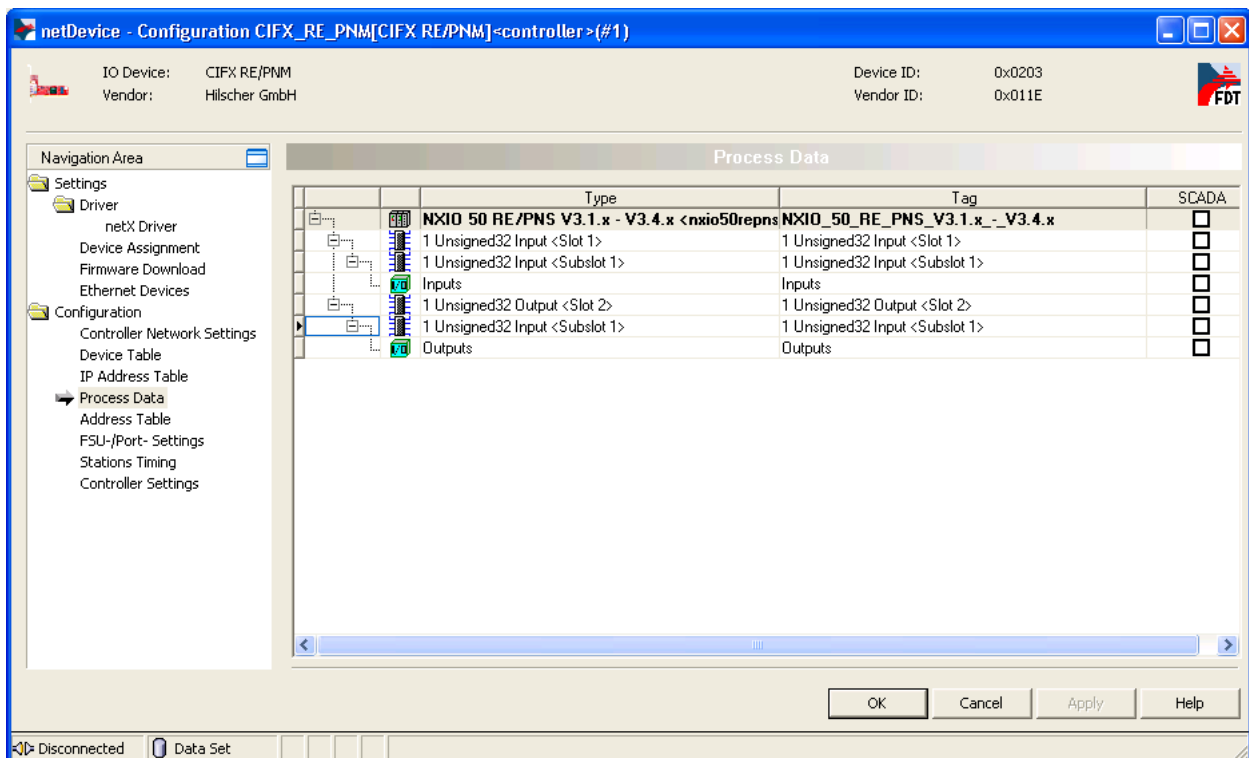
- In the **Navigation Area**, choose **Configuration > IP Address Table**, then set the IP address of the slave.



**Note:** To ensure communication, the parameters must exactly match the settings in the slave device and in the Stand-Alone Slave.



- In the **Navigation Area**, choose **Configuration** > **Process Data** to display the mapping of the input and output data.

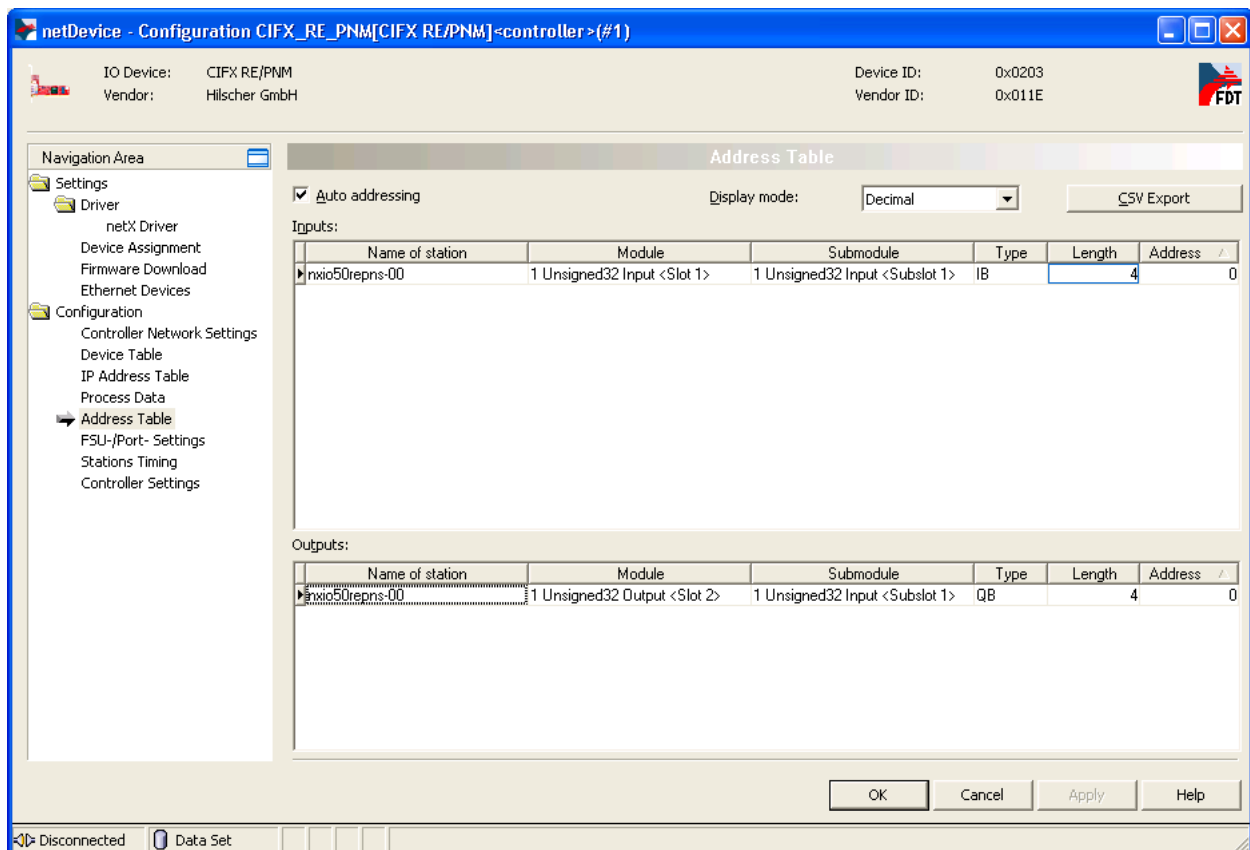


## 5. Configure I/O data.

- In the **Navigation Area**, choose **Configuration > Address Table**, then set the input and output data. For the NXIO 50-RE, these parameters are preset.

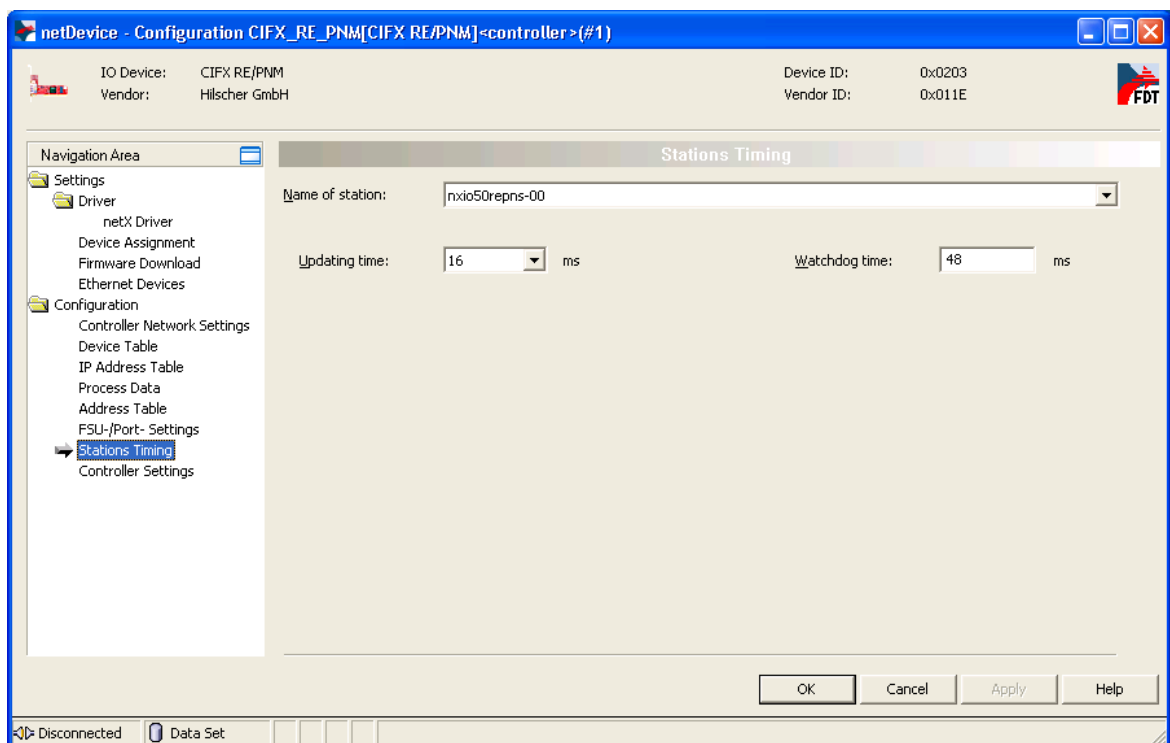
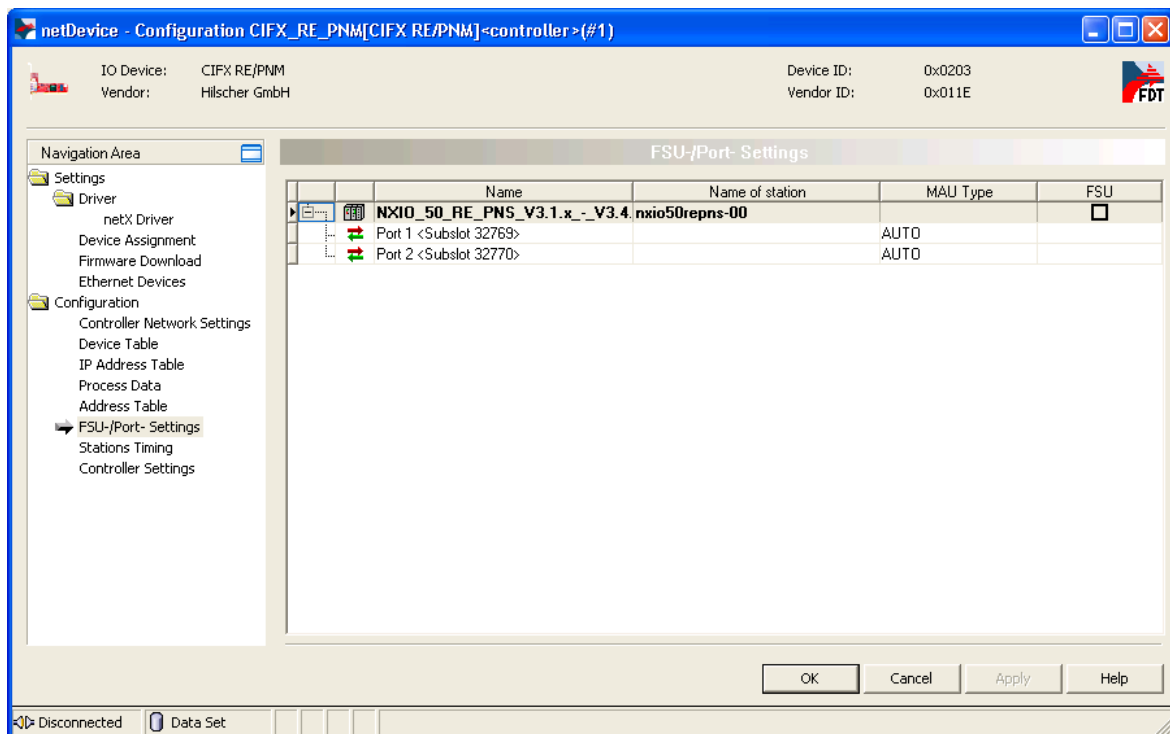


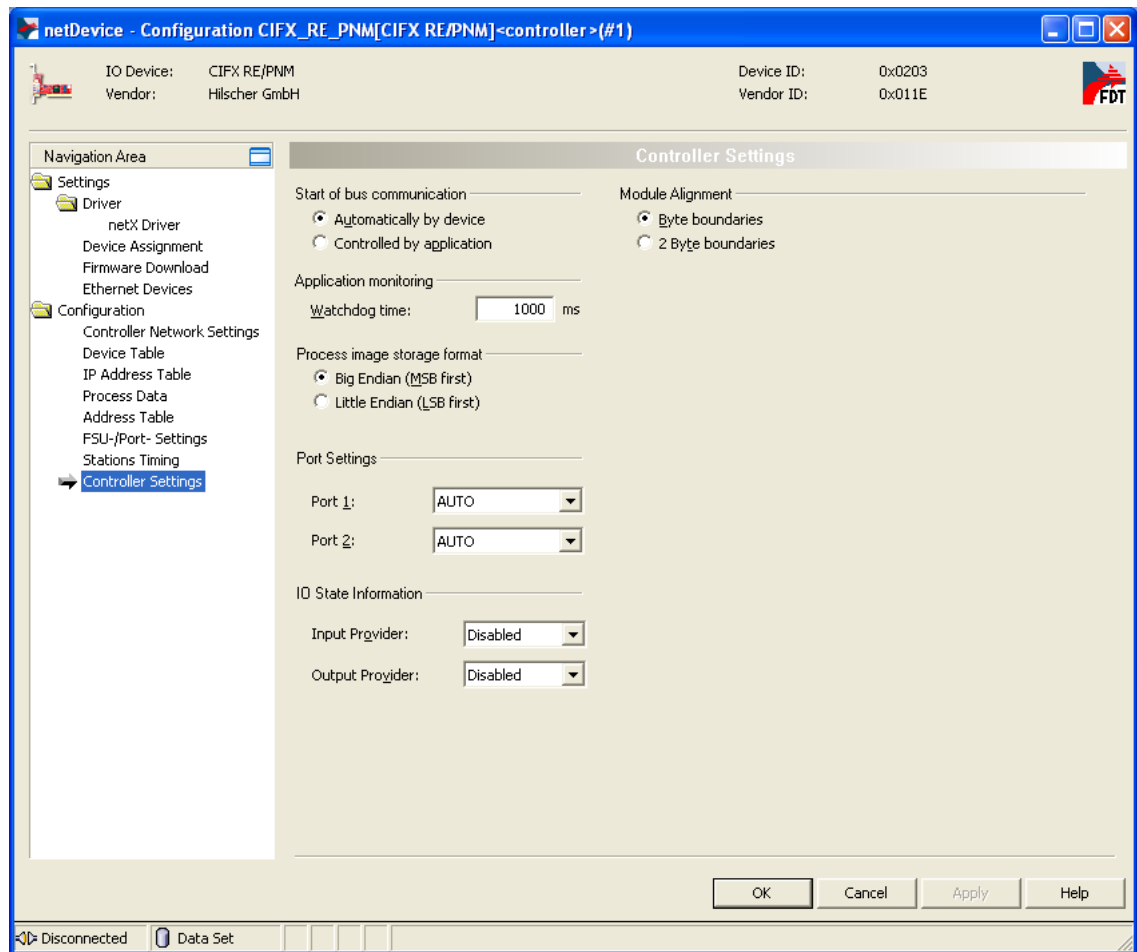
**Note:** To ensure communication, the parameters must exactly match the settings in the slave device and in the Stand-Alone Slave.



## 6. Configure master settings.

- Under **Configuration > FSU-/Port- Settings**, use the default settings.
- Under **Configuration > Stations Timing**, use the default settings.
- Under **Configuration > Controller Settings**, use the default settings.



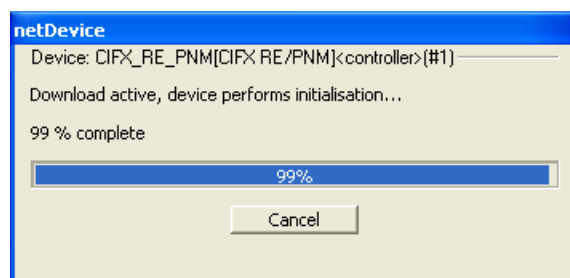
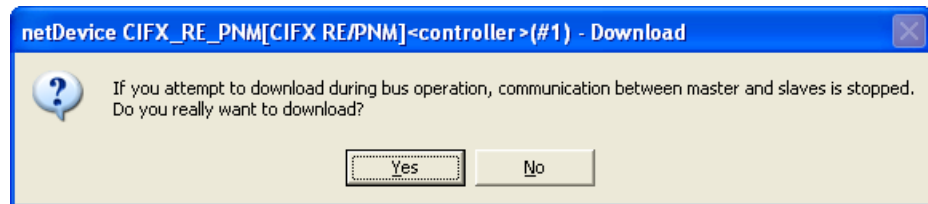
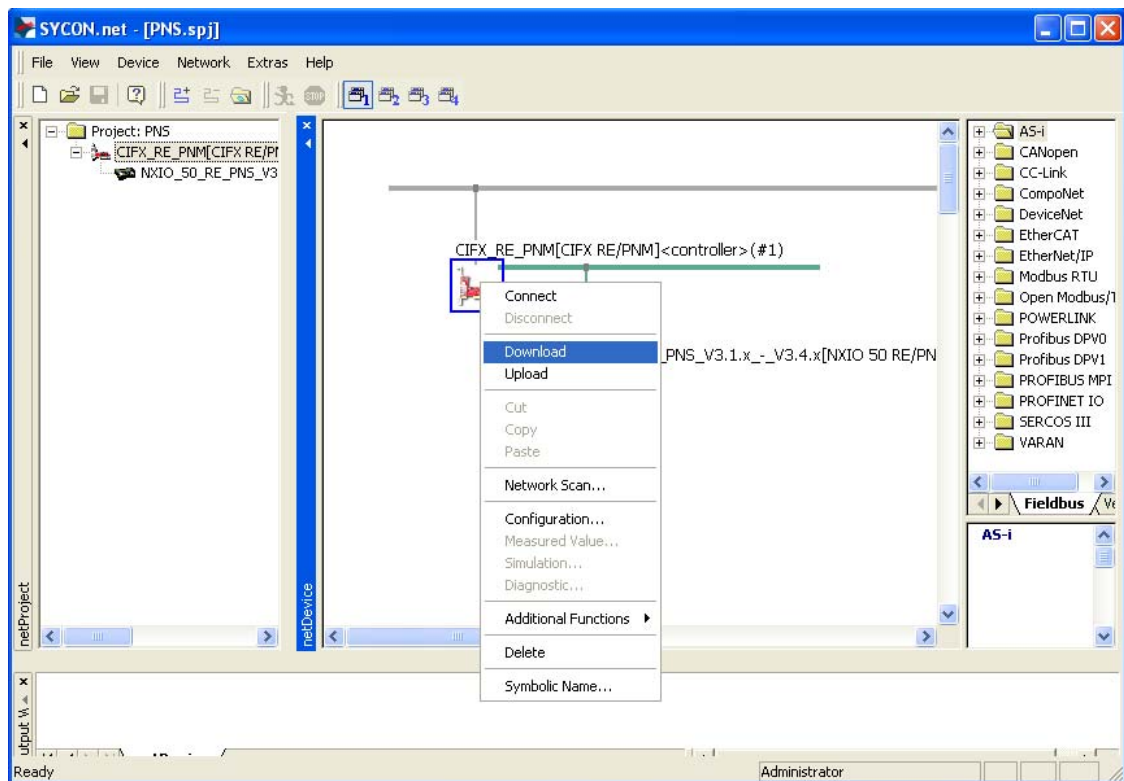


## 7. Download configuration to master.

- Right-click on the master device to open the context menu, then choose **Download**.



**Note:** After downloading the configuration, SYCON.net is connected to the master device for diagnostic purposes. The green highlighted display indicates an active connection to the master.



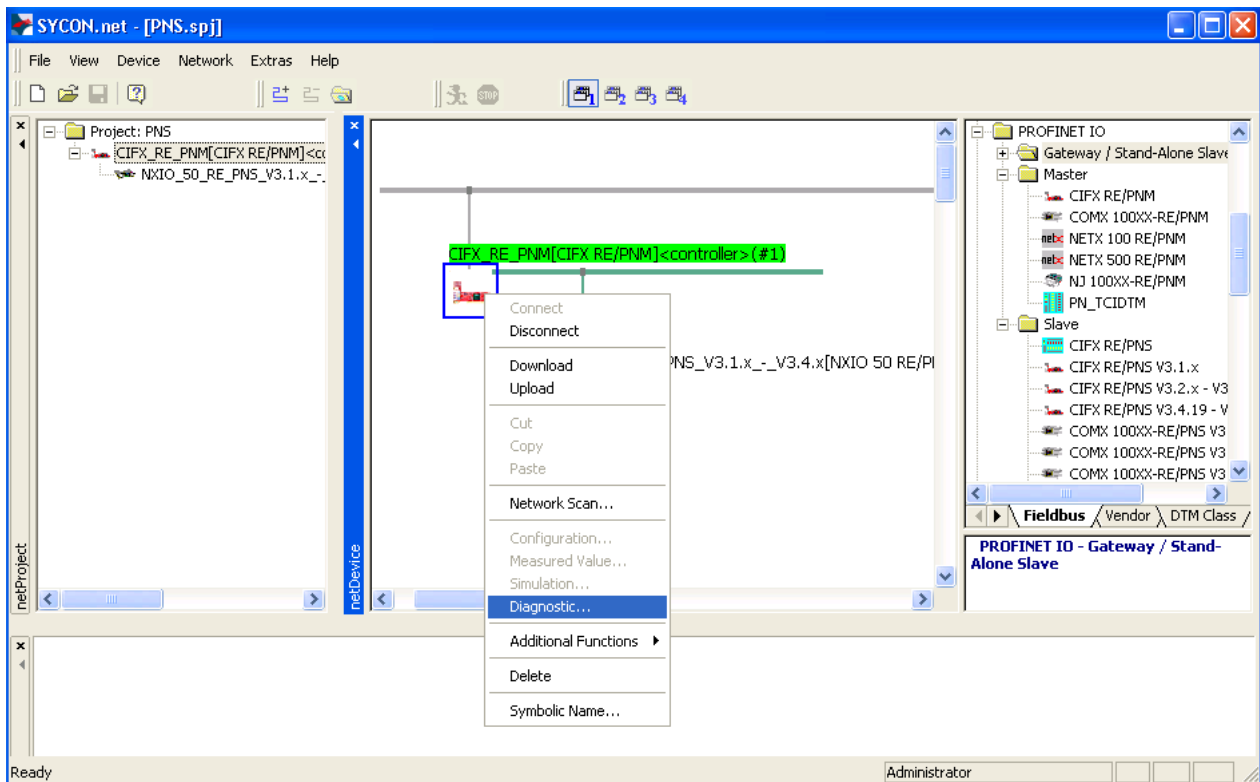
## 4.1.6 Diagnosis and Testing

### Diagnosis and Testing with SYCON.net

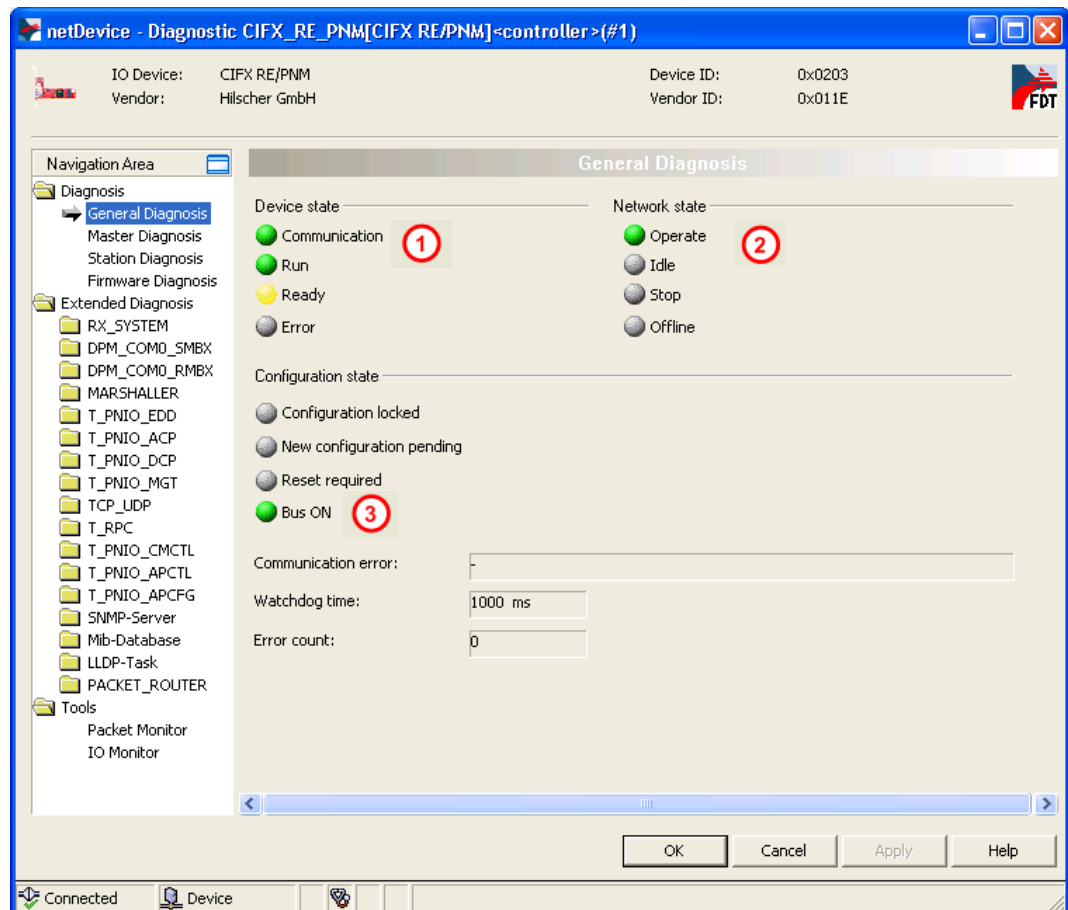
1. Connect with master and open diagnosis window for **CIFX RE/PNM**.
  - Right-click on the master device to open the context menu, then choose **Diagnostic...**



**Note:** After downloading the configuration, SYCON.net is automatically connected to the master device. If SYCON.net is not connected, right-click on the master device to open the context menu, then choose **Connect**.

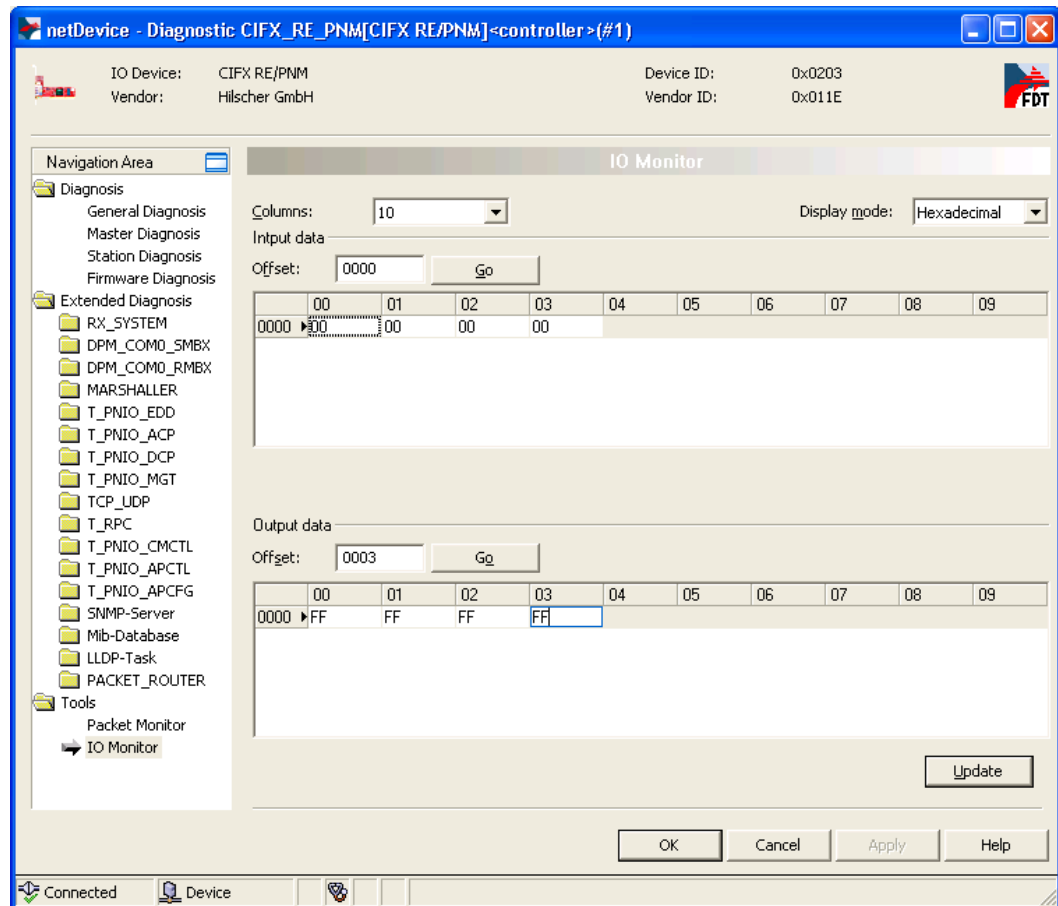


2. Check state of the network in **General Diagnosis** window.
  - In the **Navigation Area**, choose **Diagnosis > General Diagnosis**.
  - Check, whether there is a green light for **Device state > Communication** ①, **Network state > Operate** ② and **Configuration state > Bus ON** ③. This indicates a functioning communication.



3. Use IO Monitor to test the communication.
  - In the **Navigation Area**, choose **Tools > IO Monitor**.
  - Enter output data, then click **Update** button.

The input data area displays received input data.



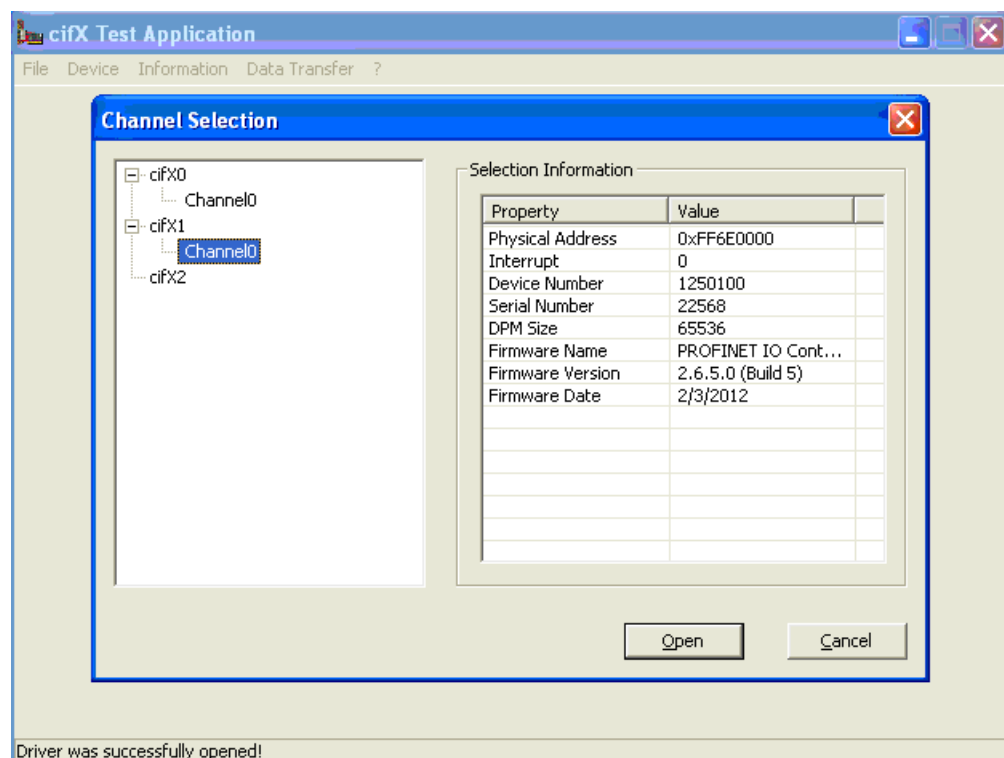
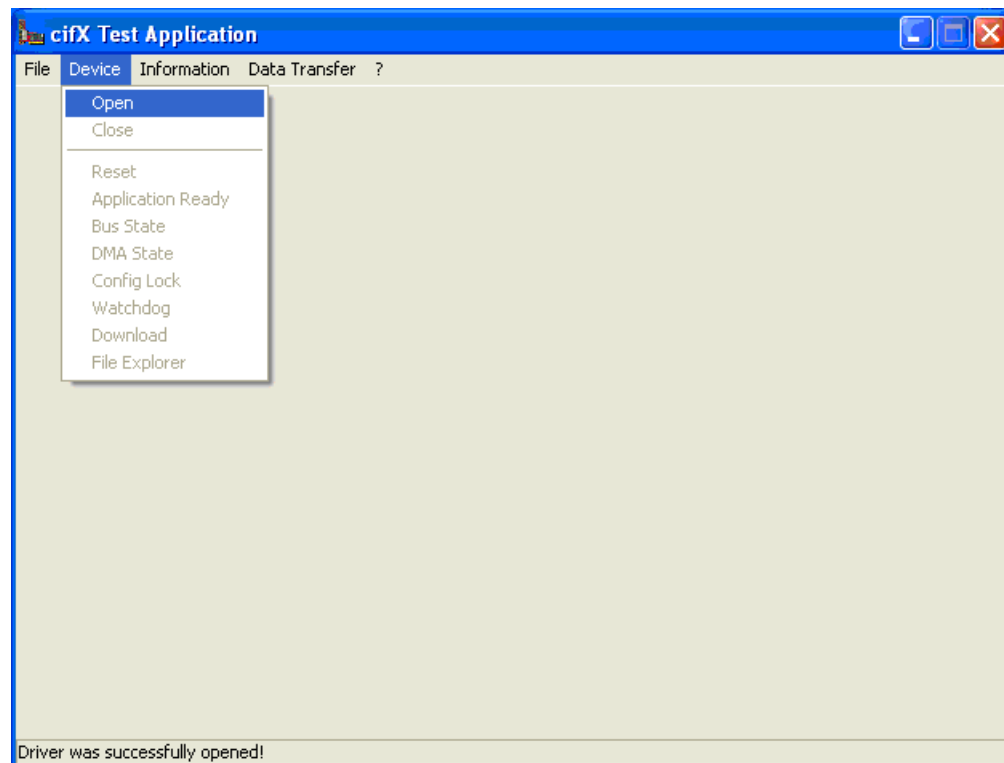
### Diagnosis and testing with cifX Test

4. Start cifX Test auxiliary tool.
  - In Windows, choose **Start > Control Panel > cifX Test**.
5. Establish connection to Hilscher device.
  - In the menu, choose **Device > Open**.
  - Select **cifX > Channel0**.



**Note:** If you open the cifX level, you can see and use all functions concerning the PC card, e. g. licenses.

If you open **cifX > Channel0**, you can see and use all functions concerning the communication channel, e. g. I/O data.

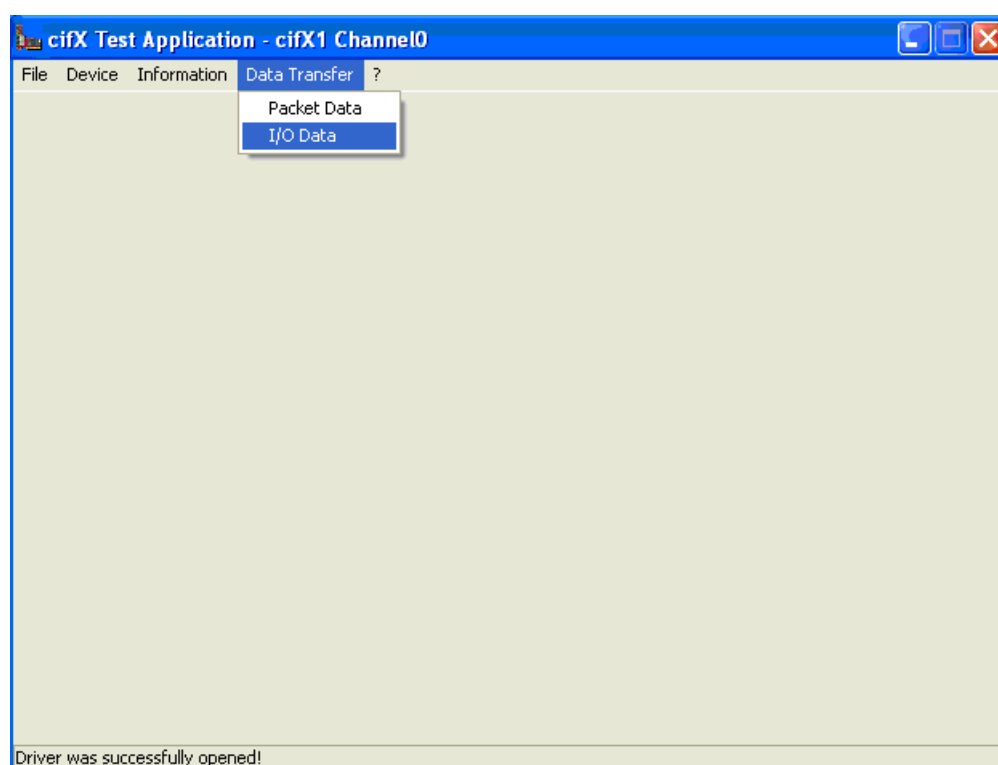


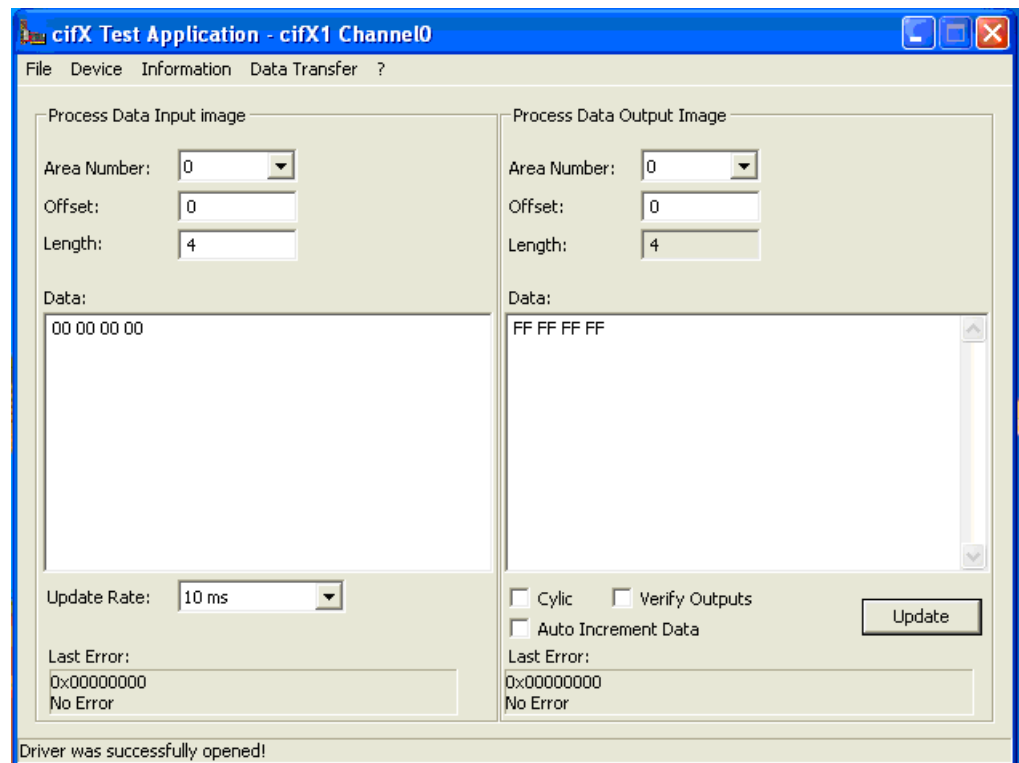
6. I/O data exchange.

- In the menu, choose **Data Transfer > I/O Data**.
- Set output data, e. g. FF FF FF FF, then click **Update**.
- Data is transferred to the NXIO 50-RE and displayed by LED.
- Enter the length of the input data to be displayed in the cifX Test auxiliary tool, e. g. "4".
- Use the buttons on the NXIO 50-RE device to create new data, then watch the incoming data in the cifX Test auxiliary tool.



**Note:** Observe the data length. It must comply with the configuration.  
With the output data, you can use **cyclic** and **auto increment**.



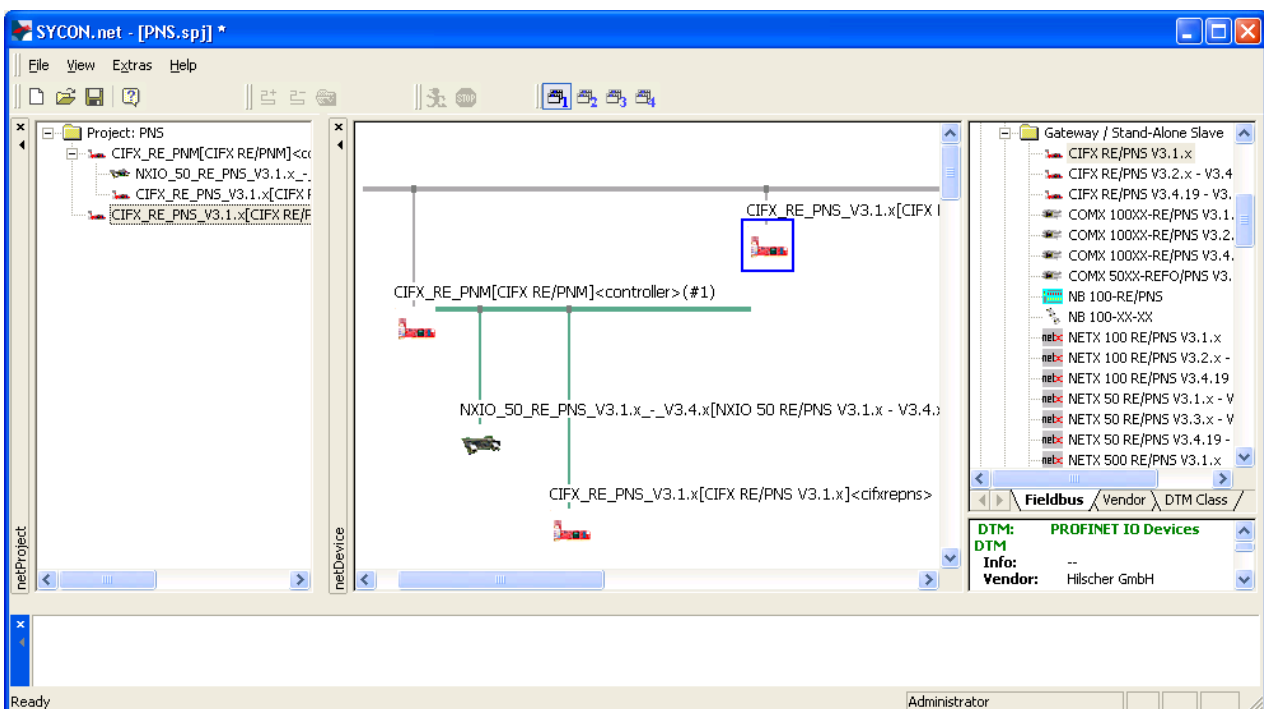


## 4.2 Setup 2: Add CIFX 50-RE as Second Slave

The following steps describe – on the basis of Setup 1 – how to integrate a CIFX 50-RE as second IO Device (slave) into the setup.

### 4.2.1 Set Up Network

1. Add PROFINET IO Device to network.
  - Select a **CIFX RE/PNS** from the **Device Catalog (Slave)** and drag and drop it onto the PROFINET network line.
2. CIFX RE/PNS is a full-scale PROFINET IO Device, thus the corresponding Stand-Alone Slave has also to be positioned in the network.
  - Select a **CIFX RE/PNS** from the **Device Catalog (Gateway/Stand-Alone Slave)** and drag and drop it onto the upper line.



### 4.2.2 Assign Hardware and Load Firmware



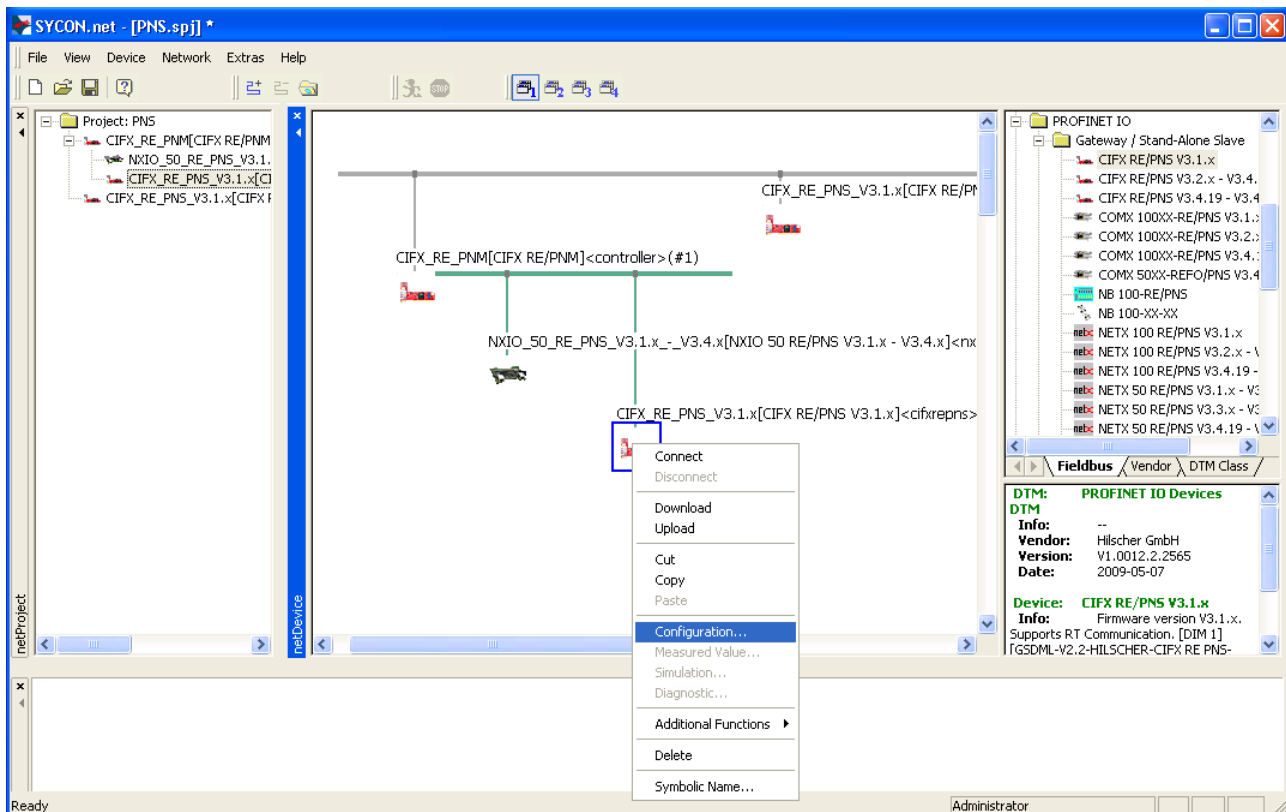
**Note:** Hardware assignment and firmware download for the master CIFX RE/PNM have already been carried out during configuration of Setup 1.

## 4.2.3 Configure Slave



**Note:** Configuration of the NXIO 50-RE has already been carried out during configuration of Setup 1.  
What now has to be done, is to configure the second PC card as IO Device (slave) CIFX RE/PNS.

1. Open Configuration window for **CIFX RE/PNS** slave.
  - Right-click on the slave device to open the context menu and choose **Configuration...**



2. Configure address.
  - **The real station name of the CIFX RE/PNS is set via Stand-Alone Slave, e. g. cifxrepns.**



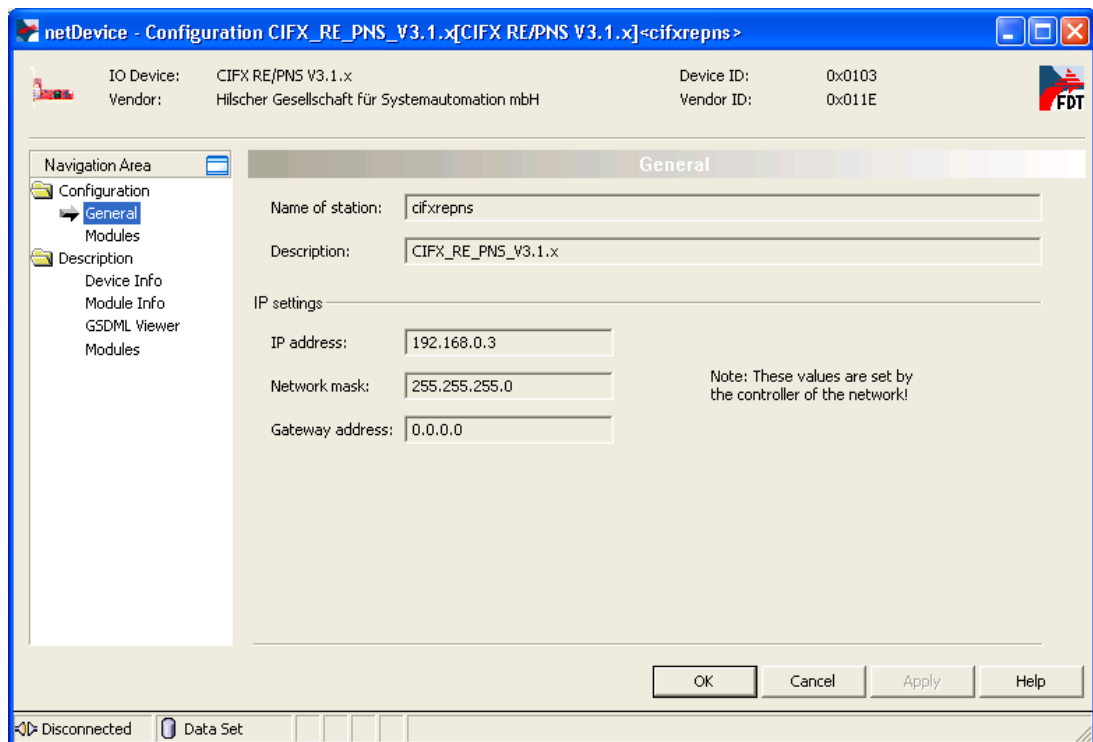
**Note:** The station name and the IP address of the CIFX RE/PNS in the network configuration can be adjusted via the master.  
Check station name and IP address under **Configuration > General**.



**Note:** In PROFINET IO, unequivocal addressing takes place via the station name, not via the IP address. Nonetheless, correct IP addressing – set in the master configuration – is necessary.



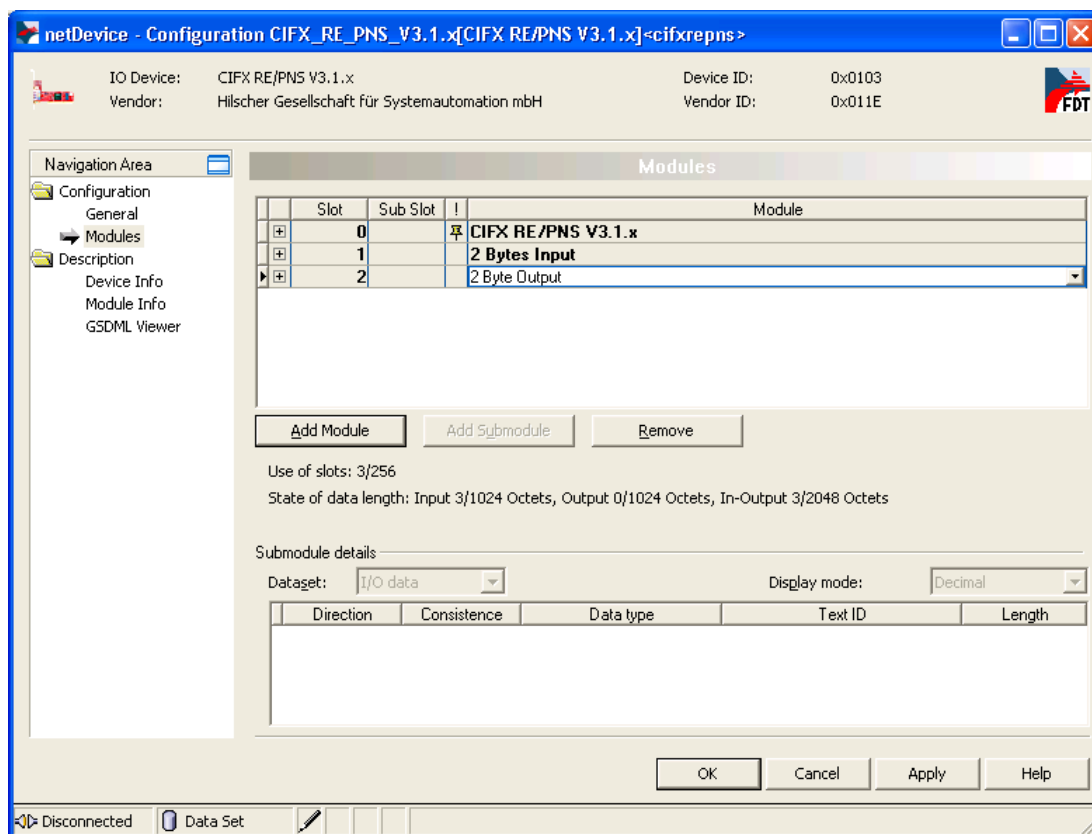
**Note:** The real station name and the IP address of full-scale Hilscher slaves can be set via Stand-Alone Slave, Hilscher master or by using the Ethernet Device Configuration tool.



### 3. Configure I/O Data.

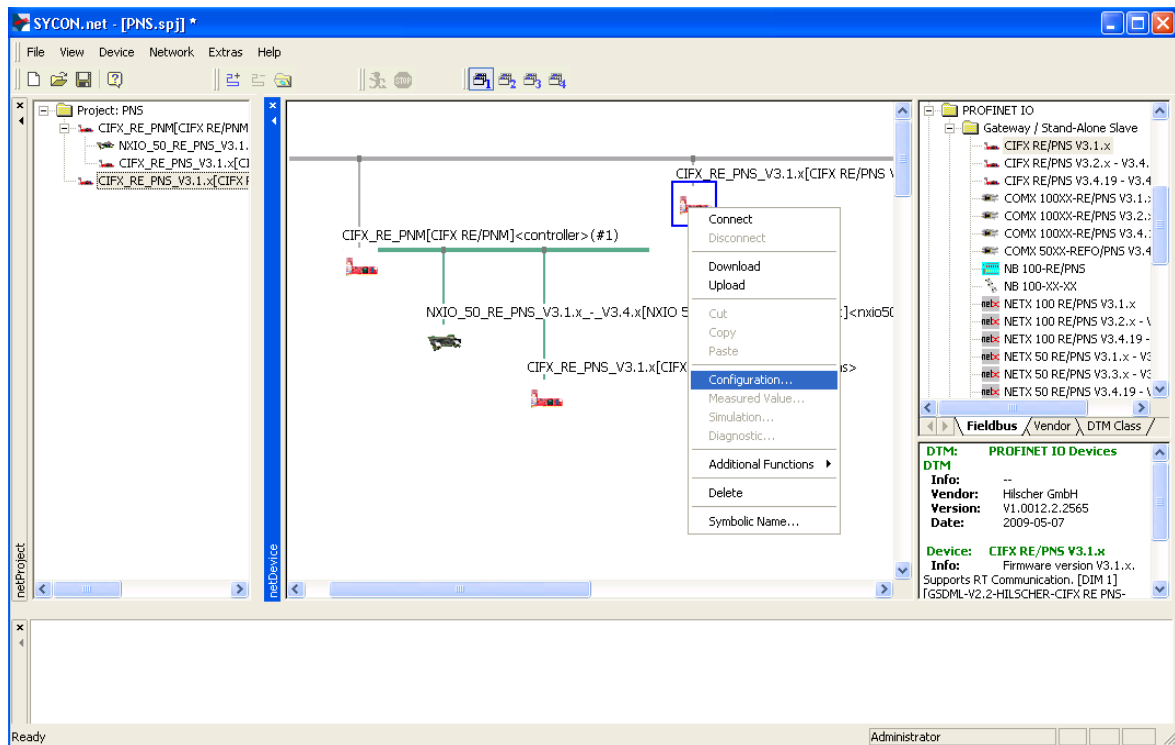
- I/O data for the CIFX RE/PNS can be freely configured, there are no pre-settings.

In the **Navigation Area**, choose **Configuration > Modules**, then configure I/O data, e. g. 2 bytes input and 2 bytes output.



#### 4.2.4 Configure Hilscher Stand-Alone Slave

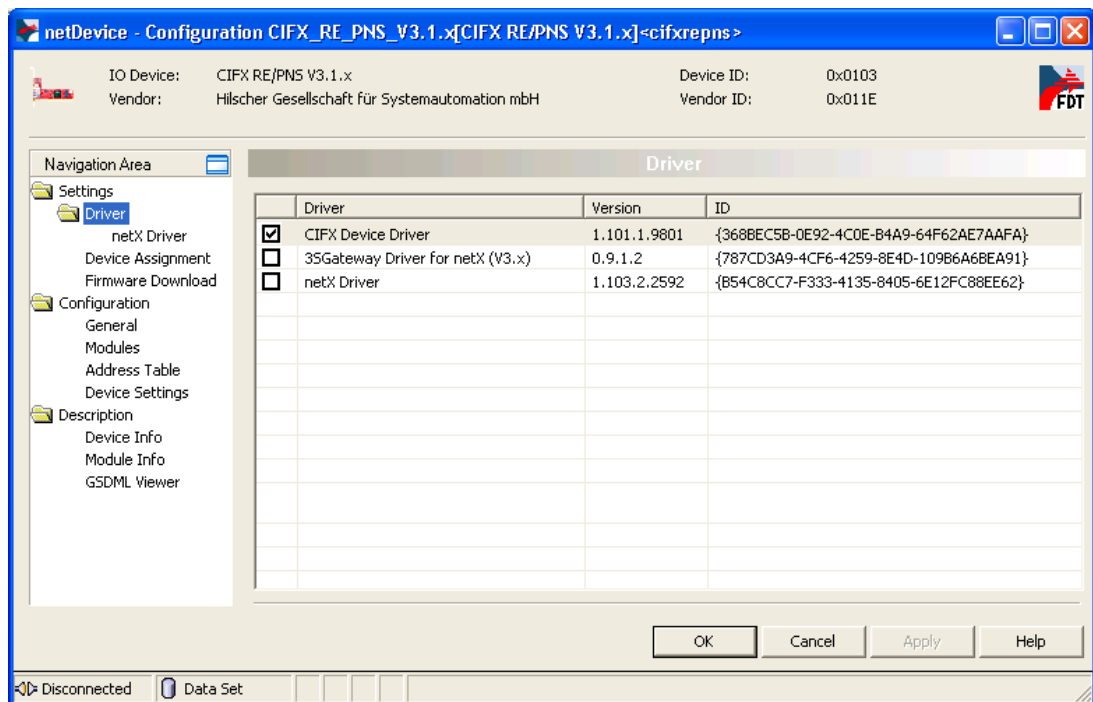
1. Open Configuration window for **CIFX RE/PNS** slave.
  - Right-click on the slave device to open the context menu and choose **Configuration...**



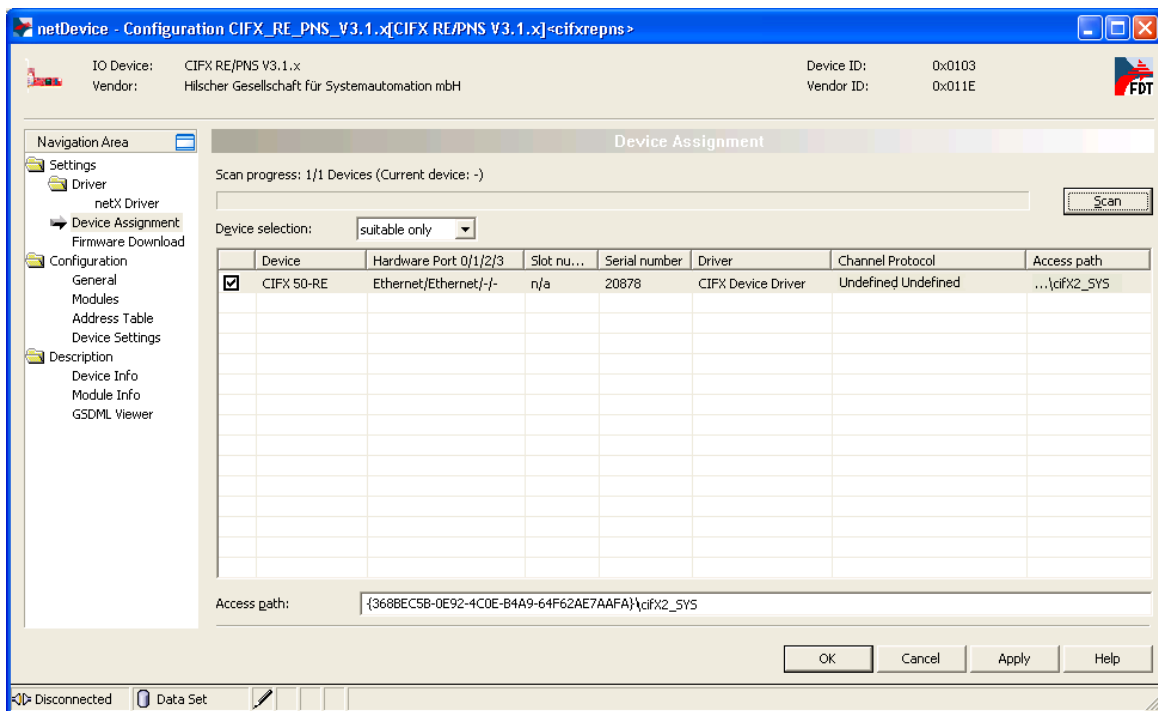
2. Select driver for accessing the slave device.

- In the **Navigation Area**, choose **Settings > Driver** and select the appropriate driver.

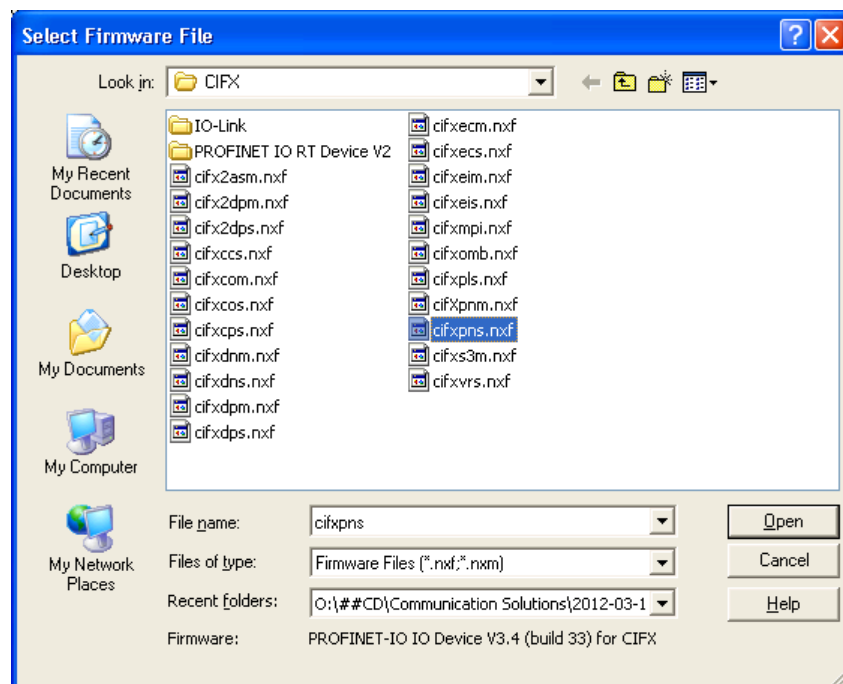
In case of access via RS-232, USB or TCP/IP – i. e. via netX Driver – additional configurations are possible under **Settings > Driver > netX Driver**.



3. Scan for connected hardware and assign device.
  - In the **Navigation Area**, choose **Settings** > **Device Assignment** and scan for available Hilscher devices. Click **Scan** button.
  - Choose the **CIFX 50-RE** by activating the check box ☒.



4. In case of PC cards: Select and load firmware.
  - In the **Navigation Area**, choose **Settings > Firmware Download**, then select the appropriate firmware: **cifxpns.nxf**.
  - Click **Open** button to load firmware into the hardware.



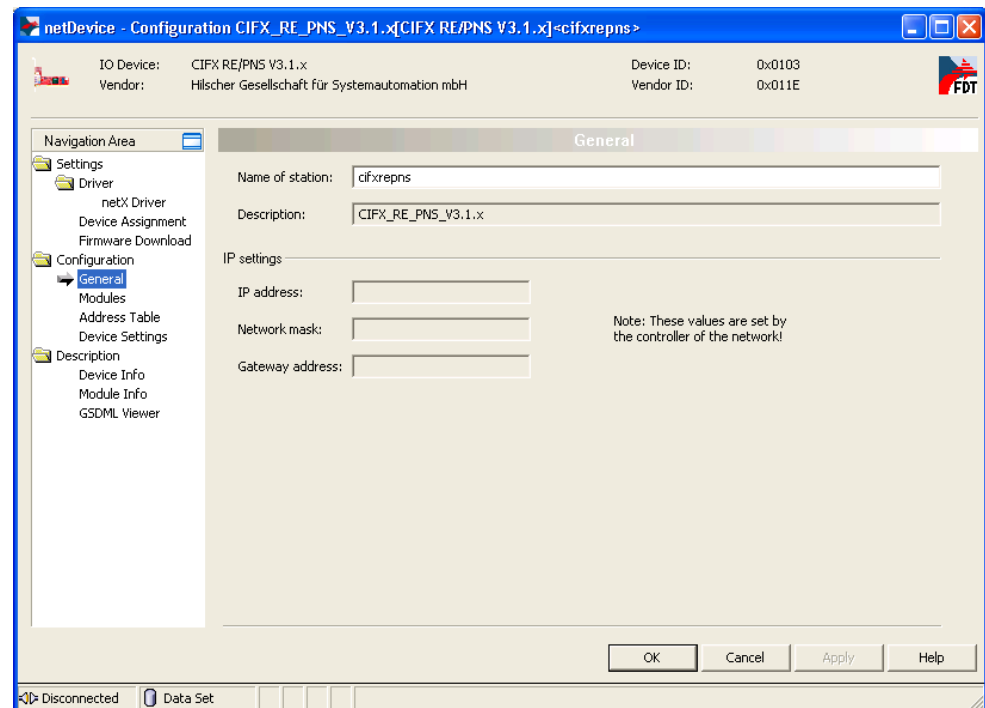


**Note:** Click **OK** to finally confirm the assignment of the hardware and the download of the firmware.

##### 5. Configure station name.

- In the **Navigation Area**, choose **Configuration > General**, then set the real station name of the slave device.

The station name must match the slave station name of the network configuration.

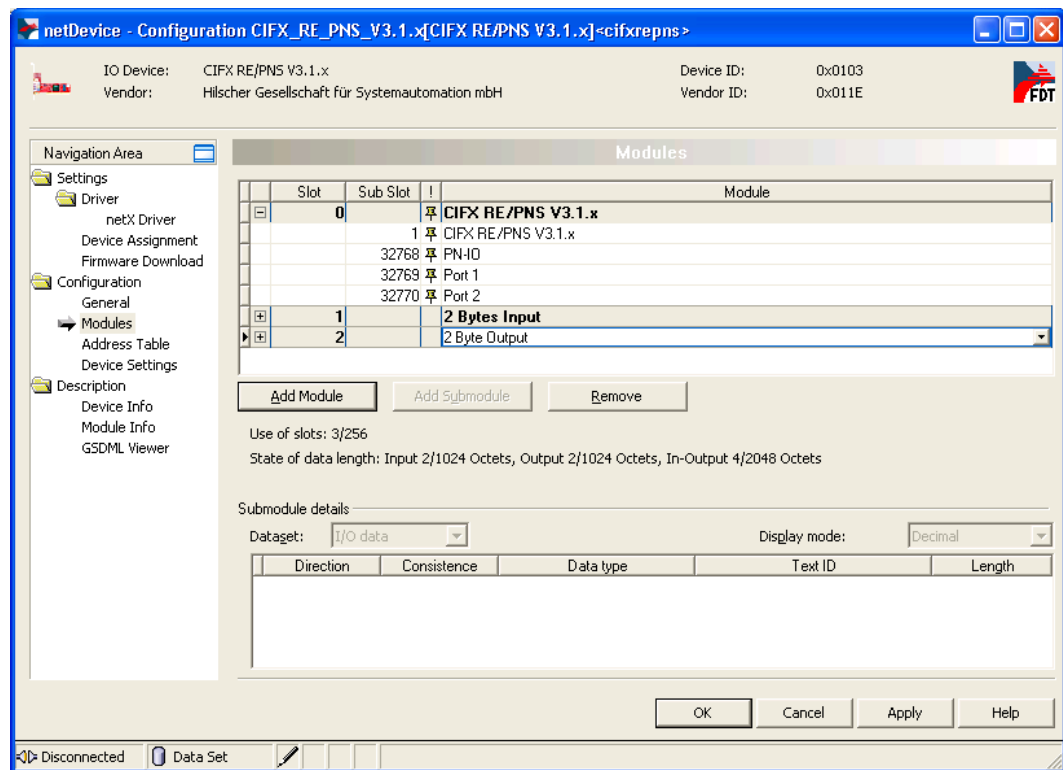


##### 6. Configure I/O Data.

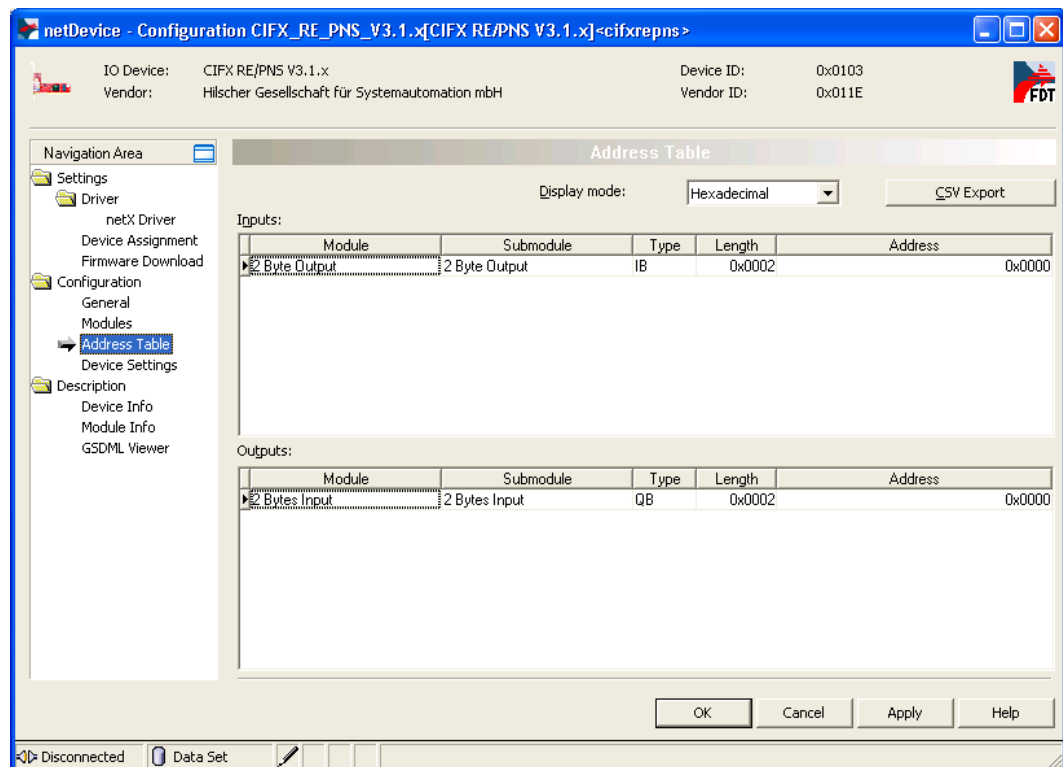
- I/O data for the CIFX RE/PNS can be freely configured, there are no pre-settings.

In the **Navigation Area**, choose **Configuration > Modules**, then set the wanted I/O data, e. g. 2 byte input and 2 byte output.

Make sure that these match the slave I/O data of the network configuration.

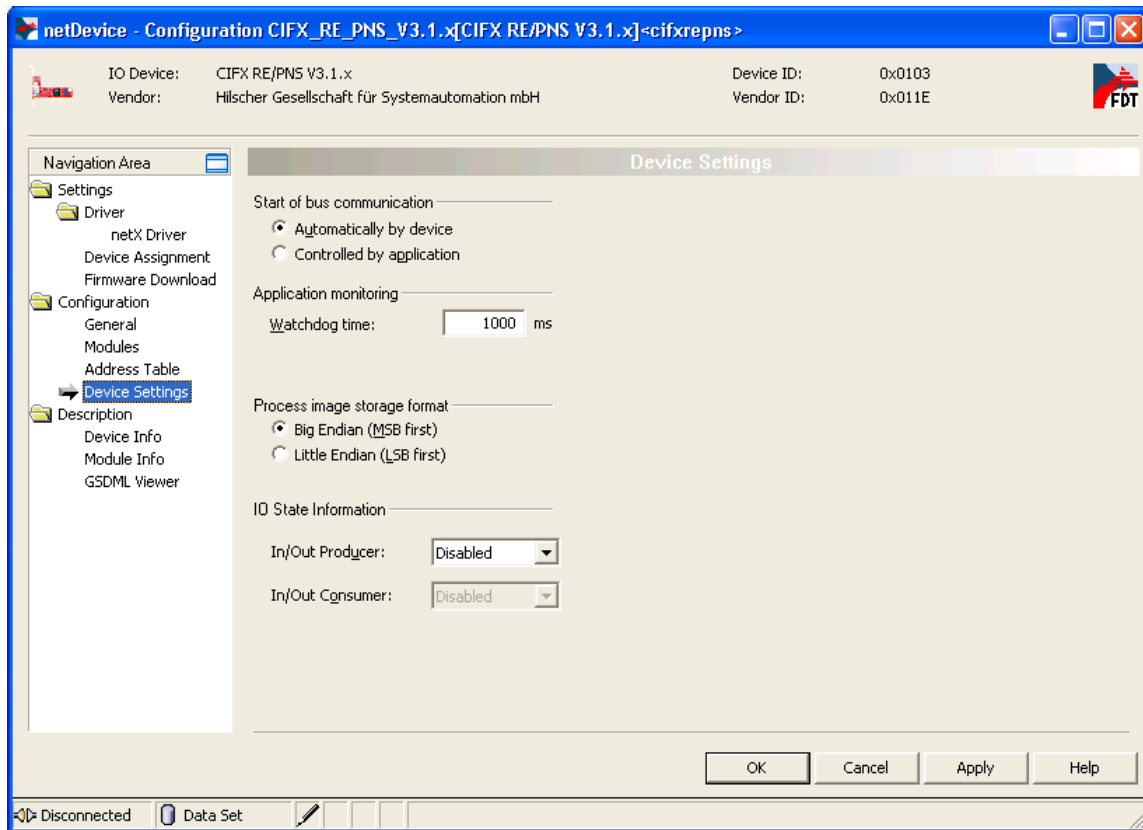


- In the **Navigation Area**, choose **Configuration > Address Table** to display the mapping of the input and the output data.



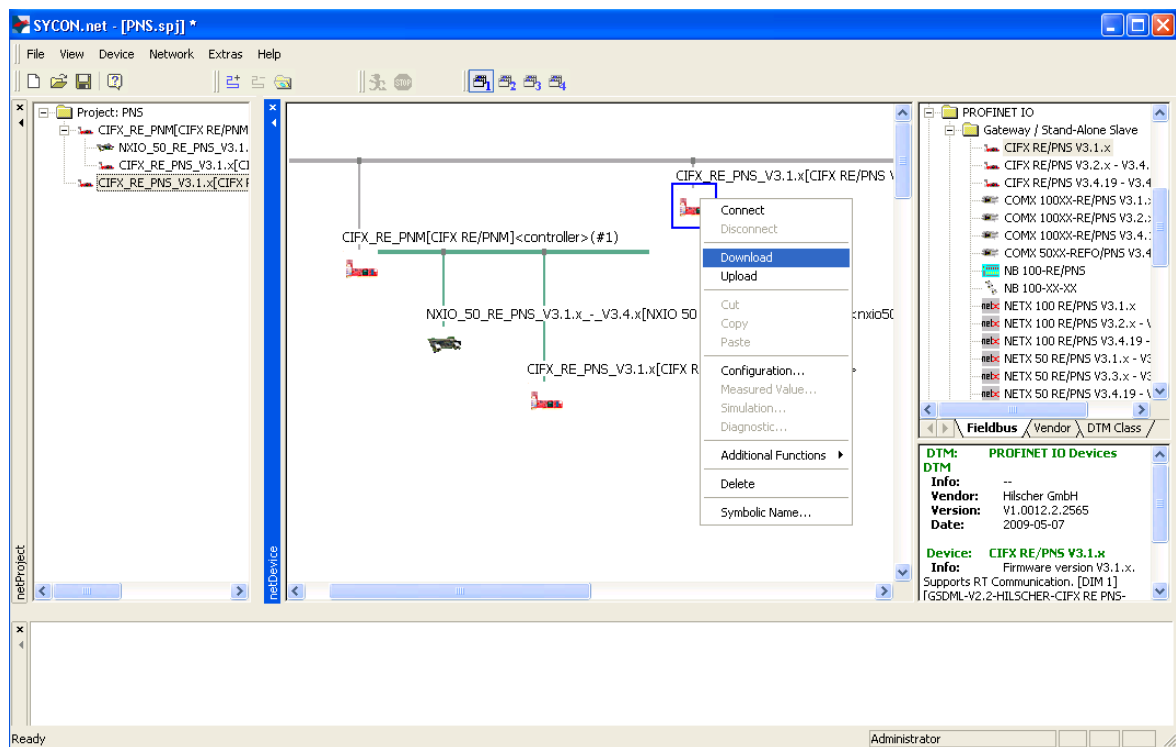
## 7. Configure device settings.

- Under **Configuration > Device Settings**, use the default settings.



## 8. Download configuration to Stand-Alone Slave.

- Right-click on the Stand-Alone Slave device to open the context menu, then choose **Download**.

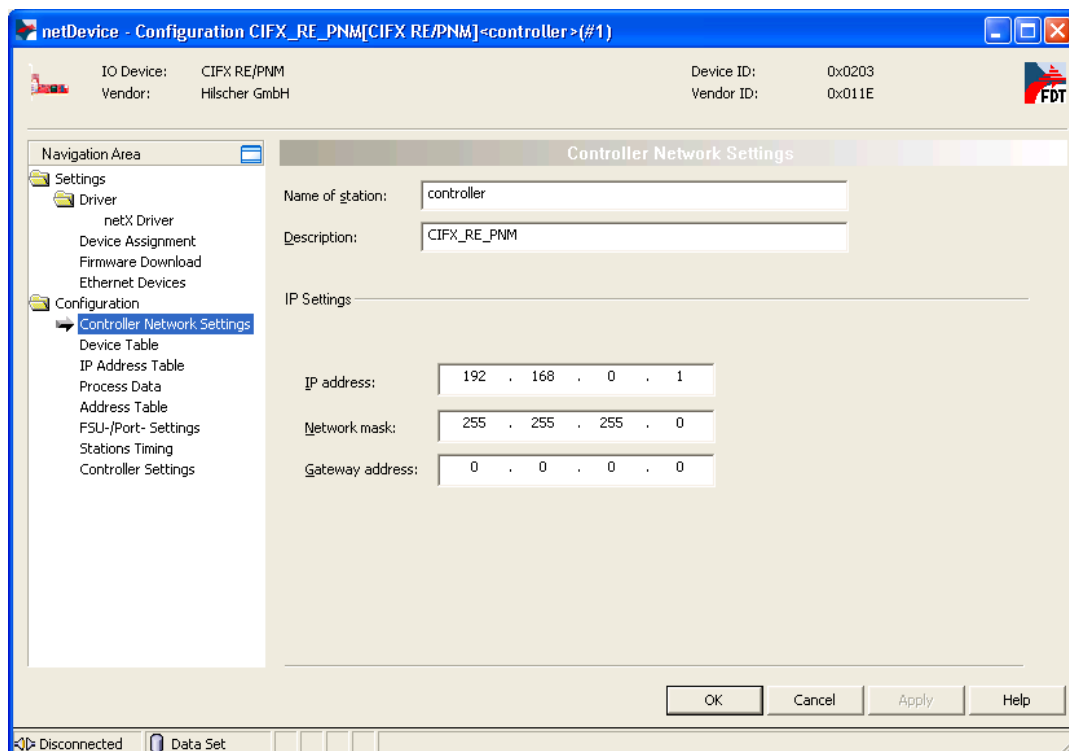


## 4.2.5 Configure Master



**Note:** The basic configuration of the CIFX RE/PNM and the NXIO 50-RE has already been carried out during configuration of Setup 1: CIFX 50-RE with NXIO 50-RE.

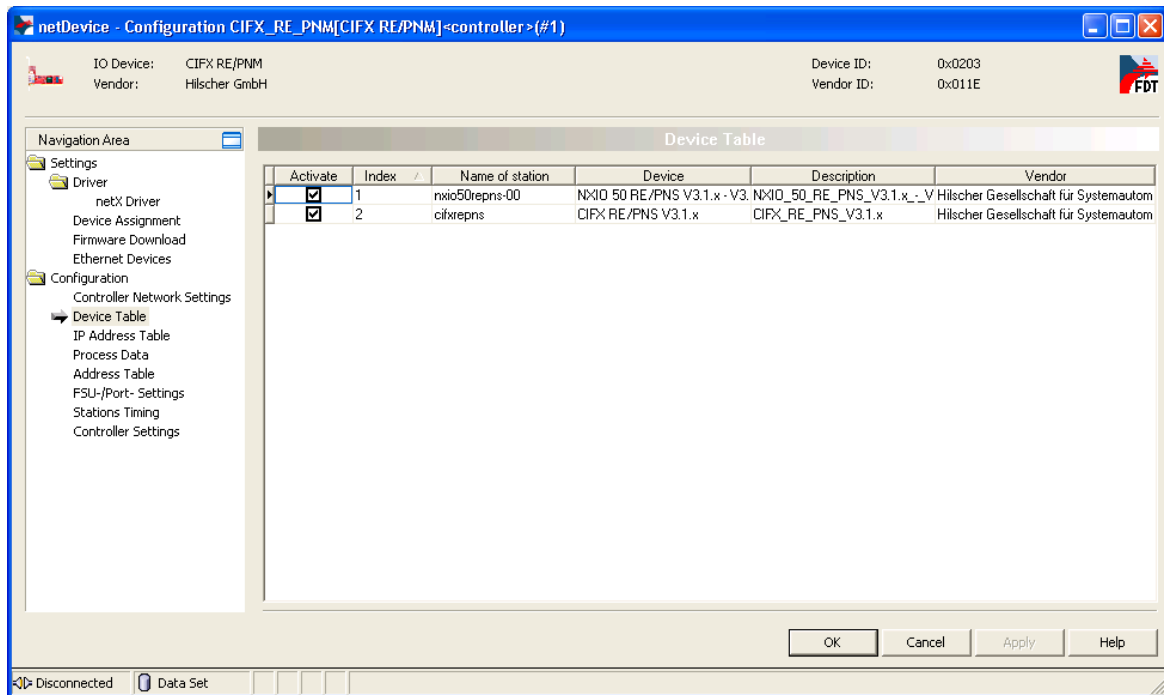
1. Open Configuration window for **CIFX RE/PNM** master.
  - Right-click on the master device to open the context menu, then choose **Configuration...**
2. Configure Controller Address.
  - In the **Navigation Area**, choose **Configuration > Controller Network Settings**, then set the station name and the IP addressing.



3. Configure station names of slaves.
  - In the **Navigation Area**, choose **Configuration > Device Table**, then set the station names of the slaves.
  - In the **Device Table** window, activate the slaves with which the master shall communicate.



**Note:** The station names of the slaves must be identical with the set real station names. On the NXIO 50-RE, the name can be set by using the rotary switch (e.g. nxio50repns-01).

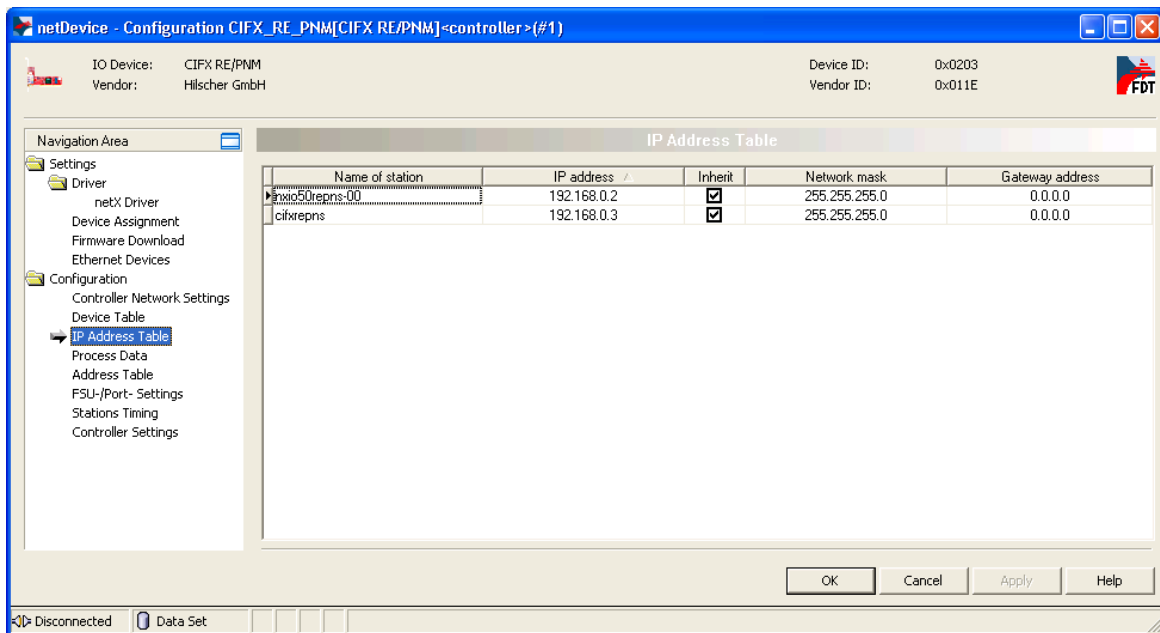


#### 4. Configure IP addresses of slaves.

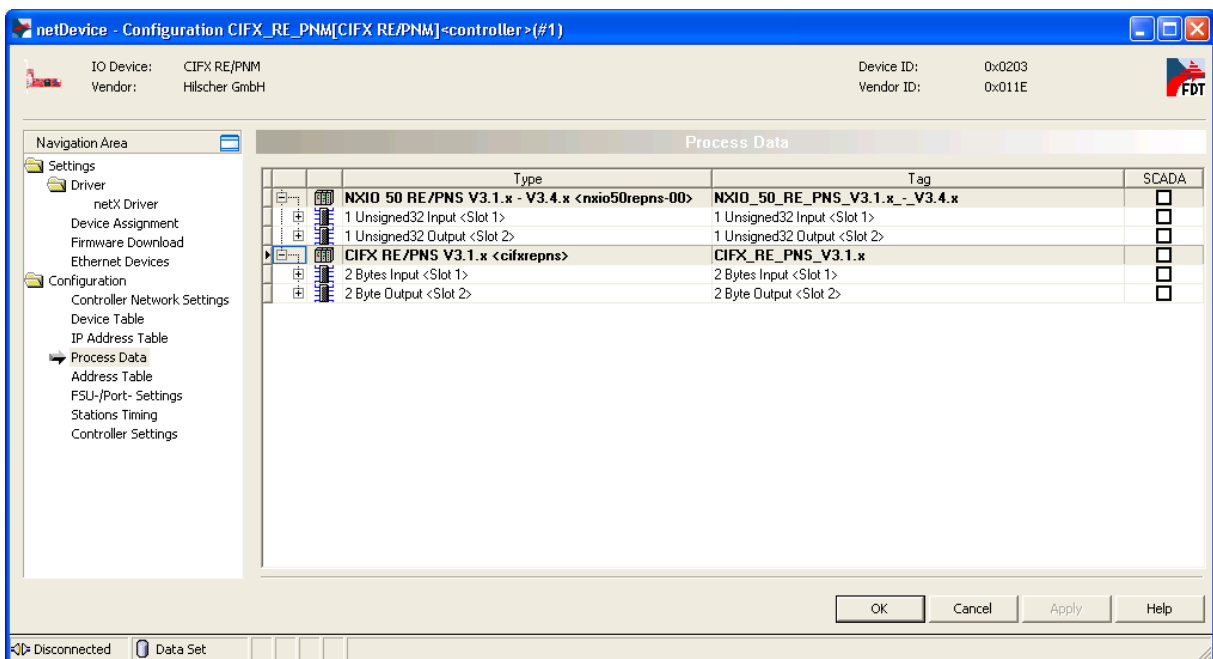
- In the **Navigation Area**, choose **Configuration > IP Address Table**, then set the IP addressing of the slaves.



**Note:** To ensure communication, the parameters must exactly match the settings in the slave device and in the Stand-Alone Slave.



- In the **Navigation Area**, choose **Configuration > Process Data** to display the mapping of the input and output data.

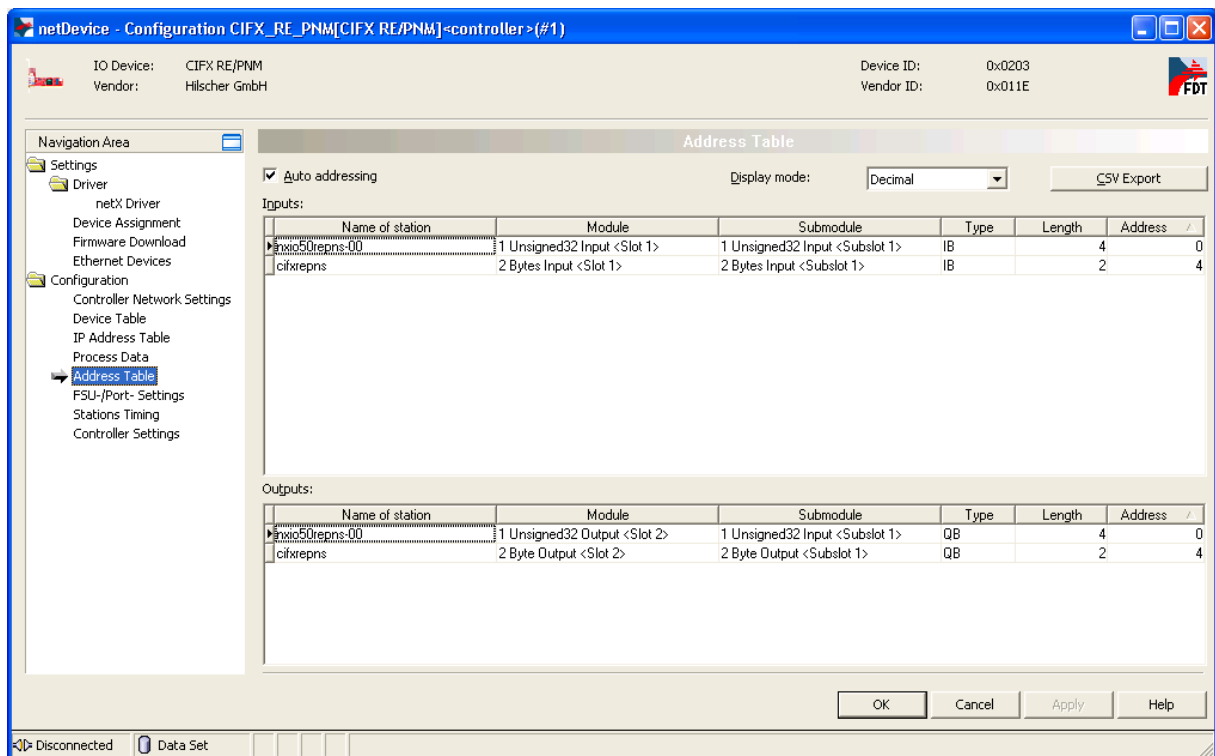


## 5. Configure I/O data.

- In the **Navigation Area**, choose **Configuration > Address Table**, then set the input and output data. For the NXIO 50-RE, these parameters are preconfigured.

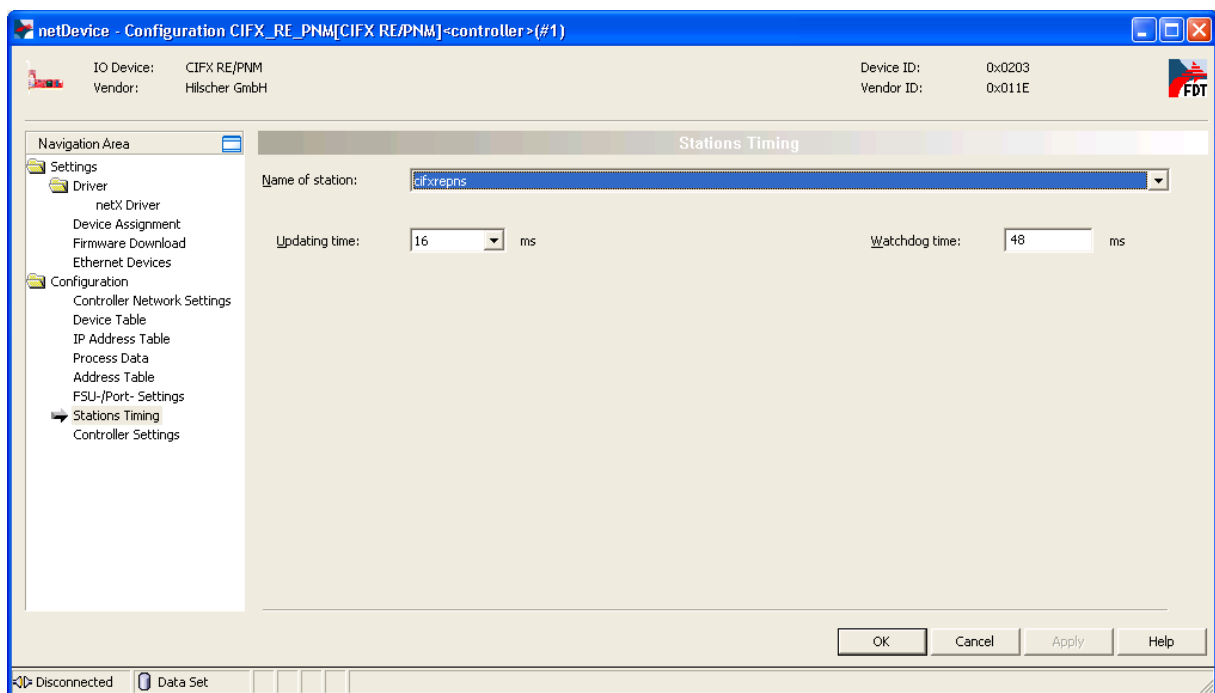
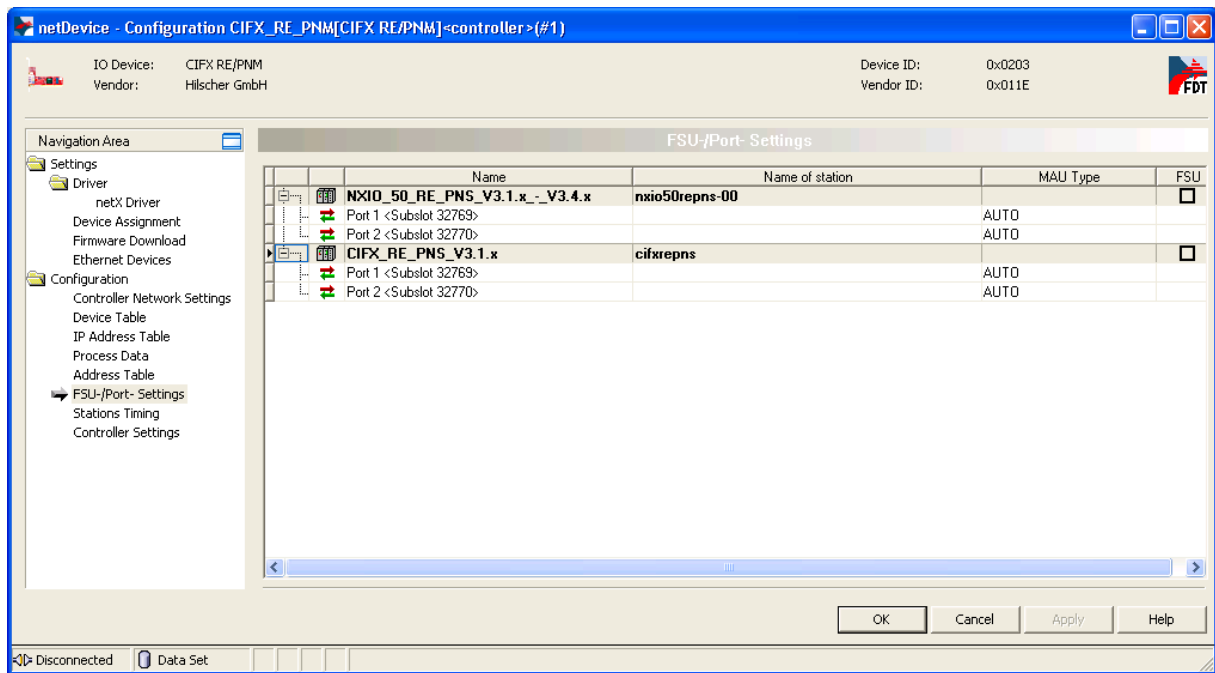


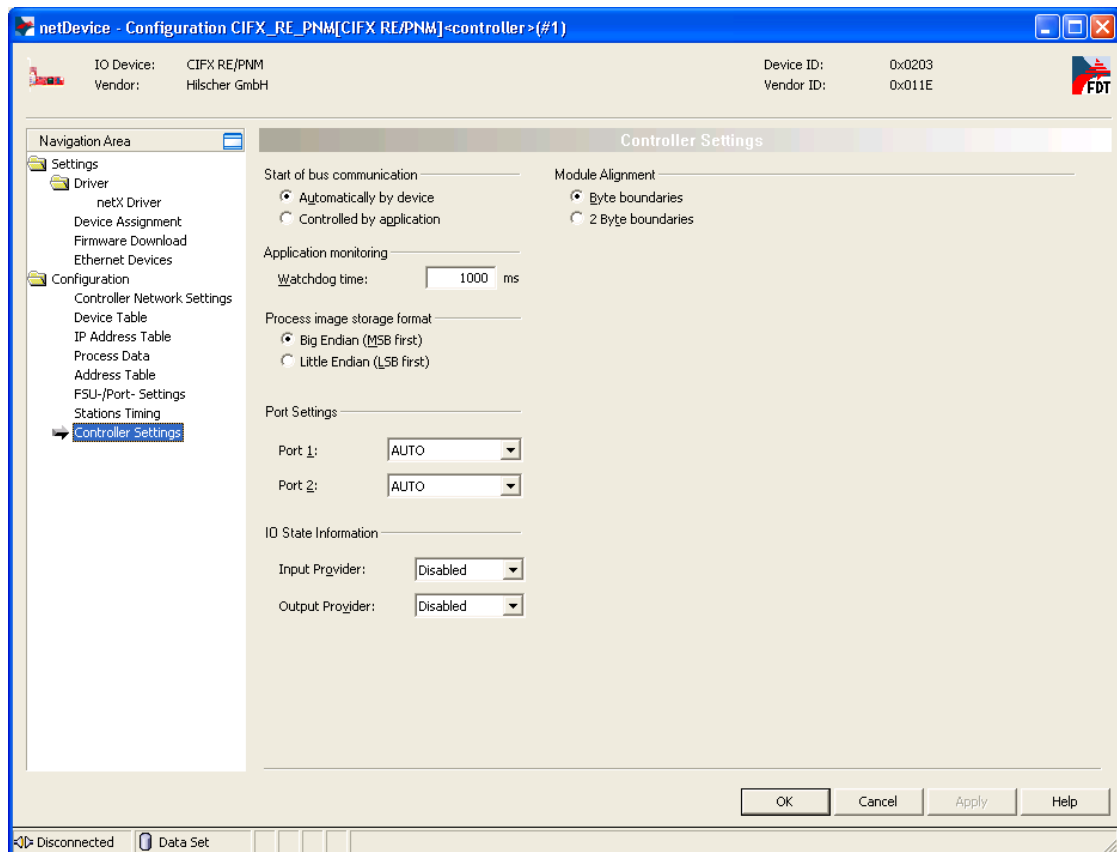
**Note:** To ensure communication, the parameters must exactly match the settings in the slave device and in the Stand-Alone Slave.



## 6. Configure master settings.

- Under **Configuration > FSU-/Port- Settings**, use the default settings.
- Under **Configuration > Stations Timing**, use the default settings.
- Under **Configuration > Controller Settings**, use the default settings.



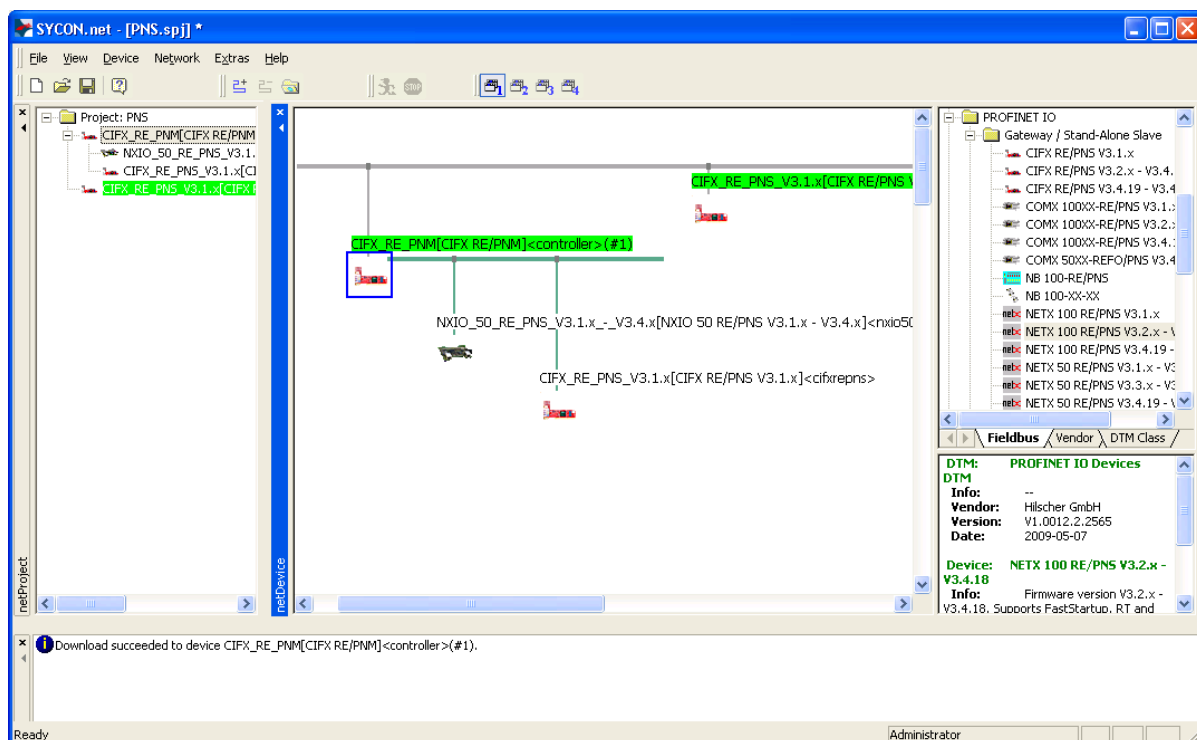
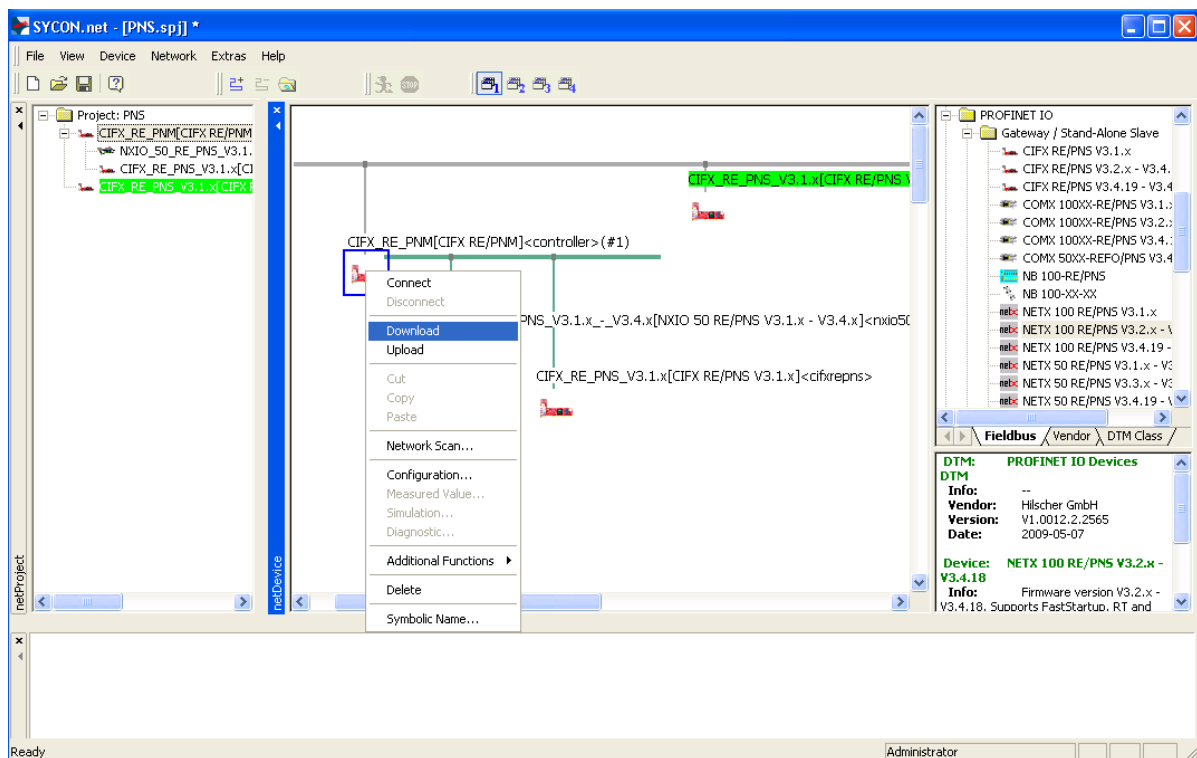


7. Download configuration to master.

- Right-click on the master device to open the context menu, then choose **Download**.



**Note:** After downloading the configuration, SYCON.net is connected to the master device for diagnostic purposes. The green highlighted display indicates an active connection to the master.



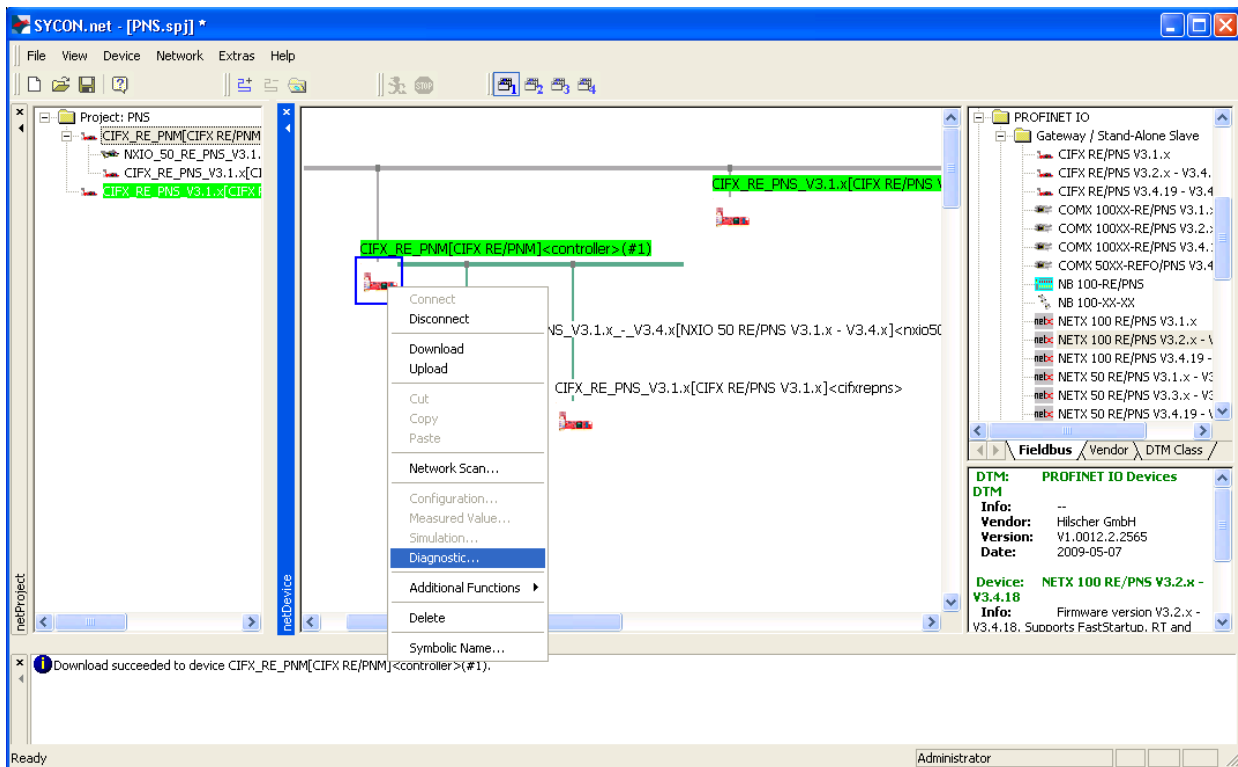
## 4.2.6 Diagnosis and Testing

### Diagnosis and testing with SYCON.net

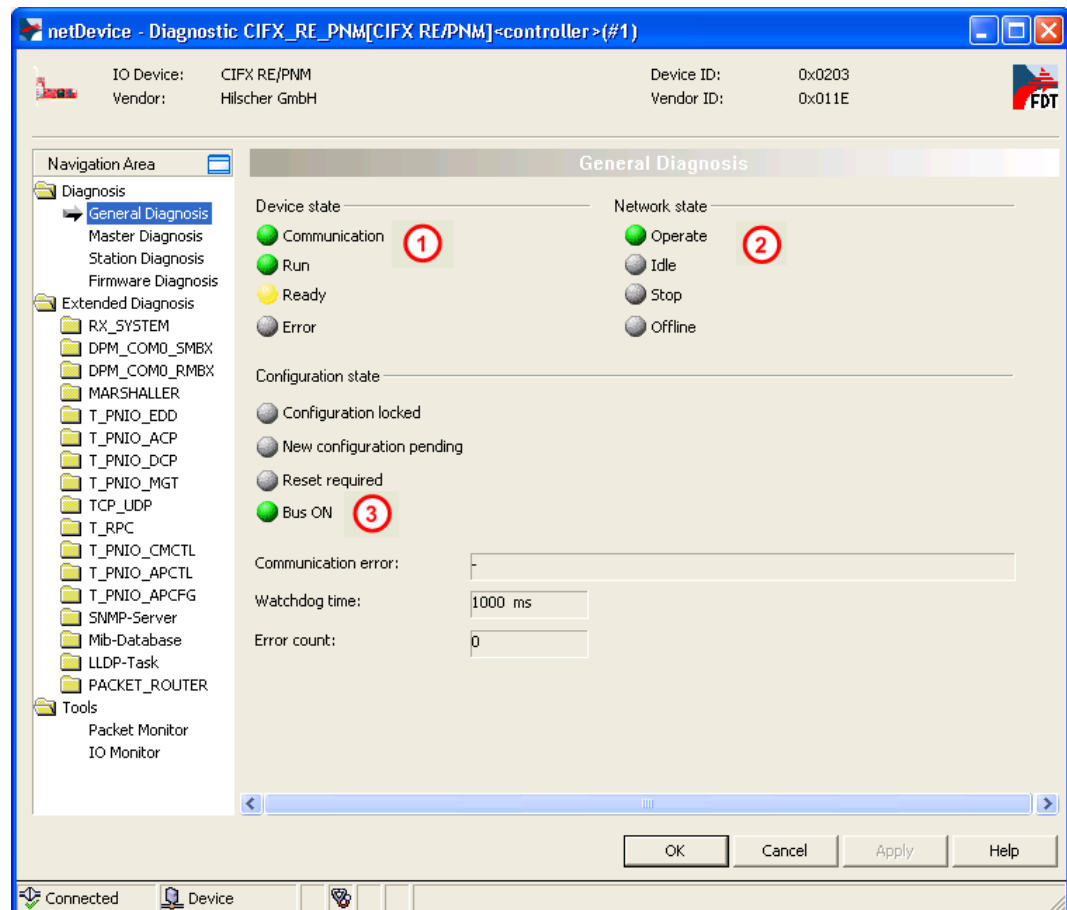
1. Connect with master and open diagnosis window for **CIFX RE/PNM**.
  - Right-click on the master device to open the context menu, then choose **Diagnostic...**



**Note:** After downloading the configuration, SYCON.net is automatically connected to the master device. If SYCON.net is not connected, right-click on the master device to open the context menu, then choose **Connect**.

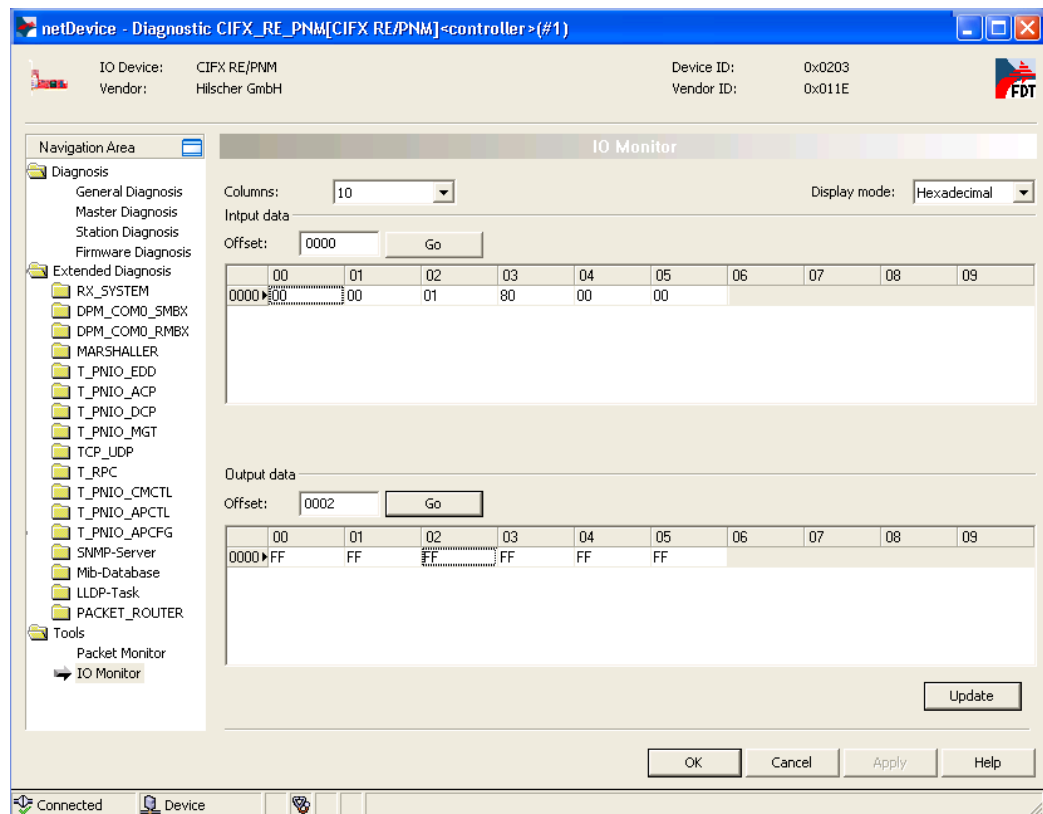


2. Check state of the network in **General Diagnosis** window.
  - In the **Navigation Area**, choose **Diagnosis > General Diagnosis**.
  - Check, whether there is a green light for **Device state > Communication** ①, **Network state > Operate** ② and **Configuration state > Bus ON** ③. This indicates a functioning communication.



3. Use IO Monitor to test the communication.
  - In the **Navigation Area**, choose **Tools > IO Monitor**.
  - Enter output data, then click **Update** button.

The input data area displays the received input data.



### Diagnosis and testing with cifX Test

#### 4. Start cifX Test auxiliary tool.

- In Windows, choose **Start > Control Panel > cifX Test**.

#### 5. Open the Hilscher device to which you want to establish a connection.

- In the menu, choose **Device > Open**.
- Select **cifX > Channel0**.  
Open the PROFINET slave card.

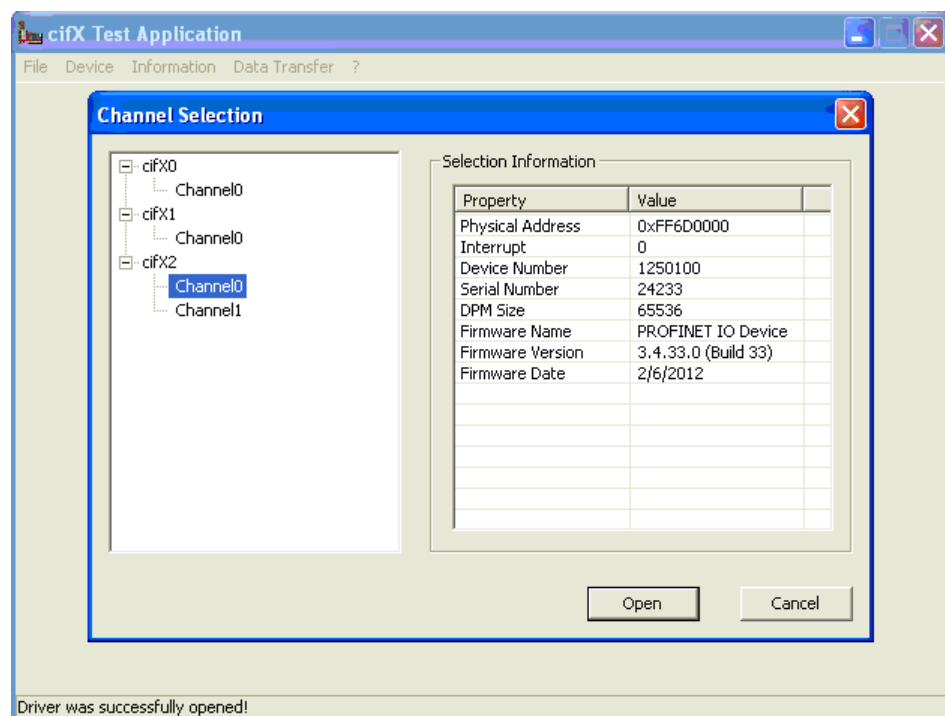
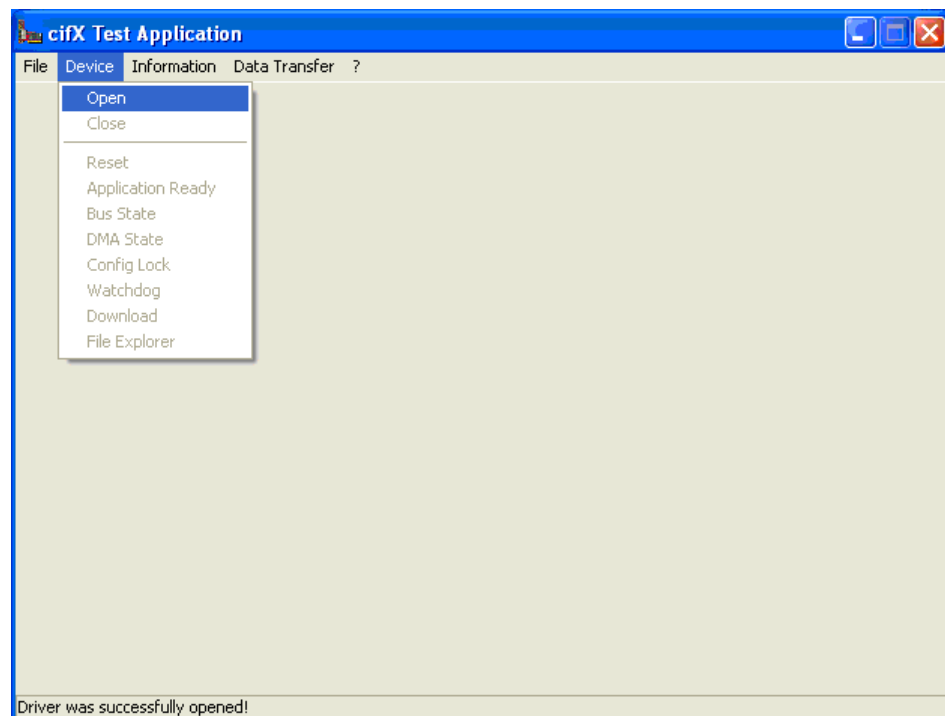


**Note:** If you open the cifX level, you can see and use all functions concerning the PC card, e. g. licenses.

If you open **cifX > Channel0**, you can see and use all functions concerning the communication channel, e. g. I/O data.



**Note:** You can run several instances of the cifX Test application simultaneously. Thus, you can connect to the master (CIFX RE/PNM) and the slave (CIFX RE/PNS) at the same time, and exchange data between the two devices.

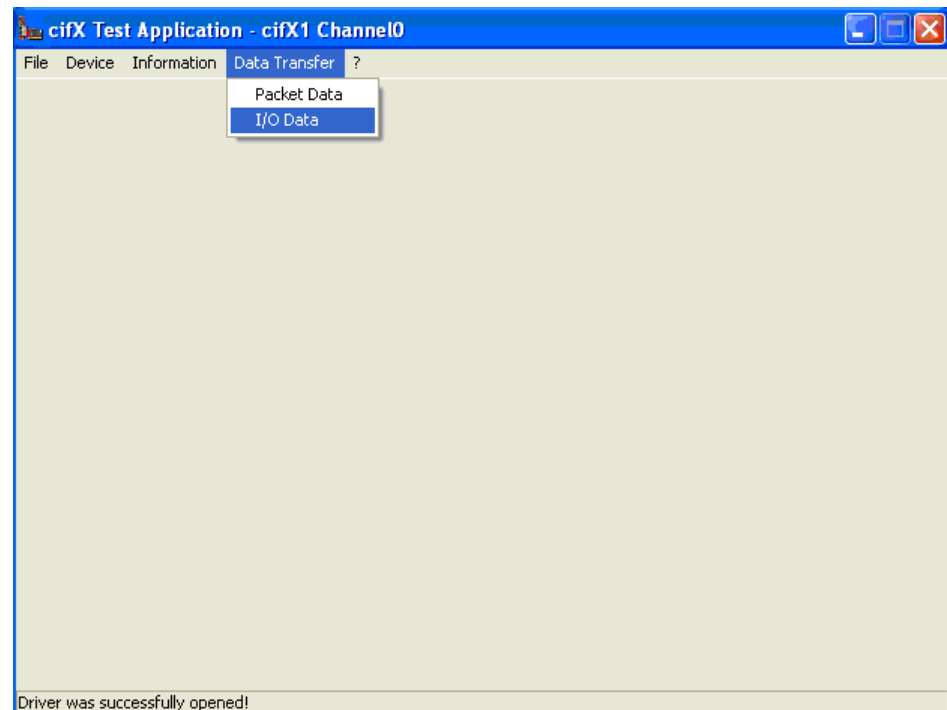


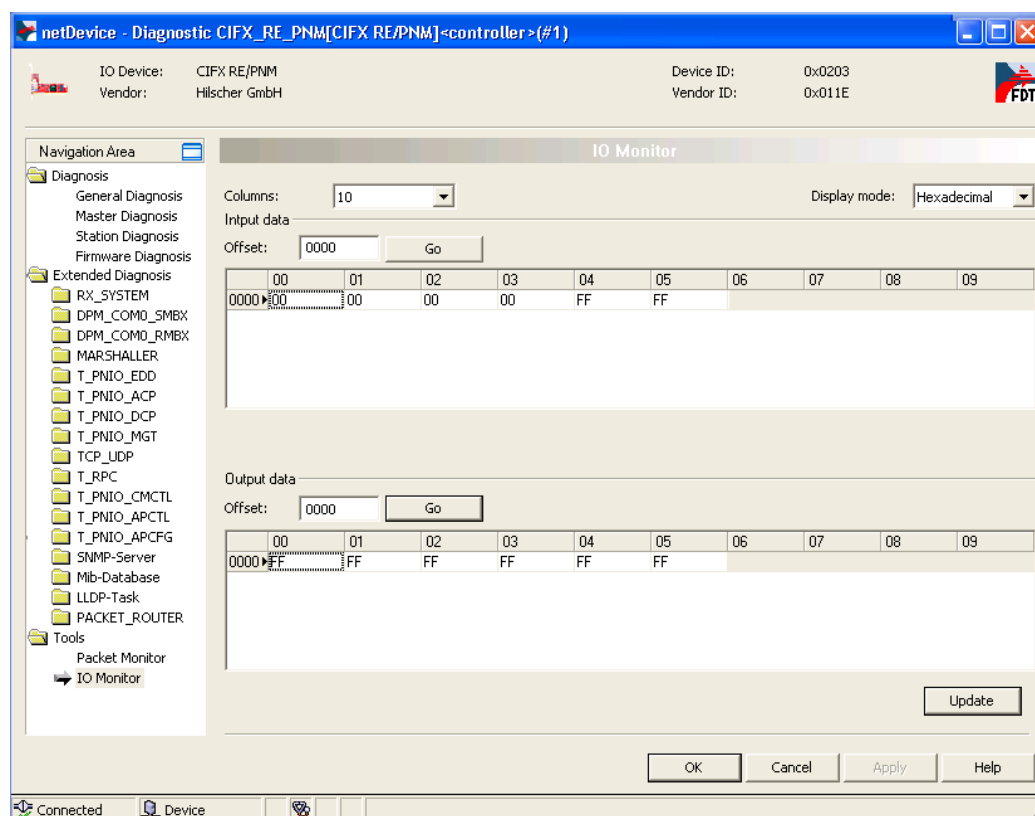
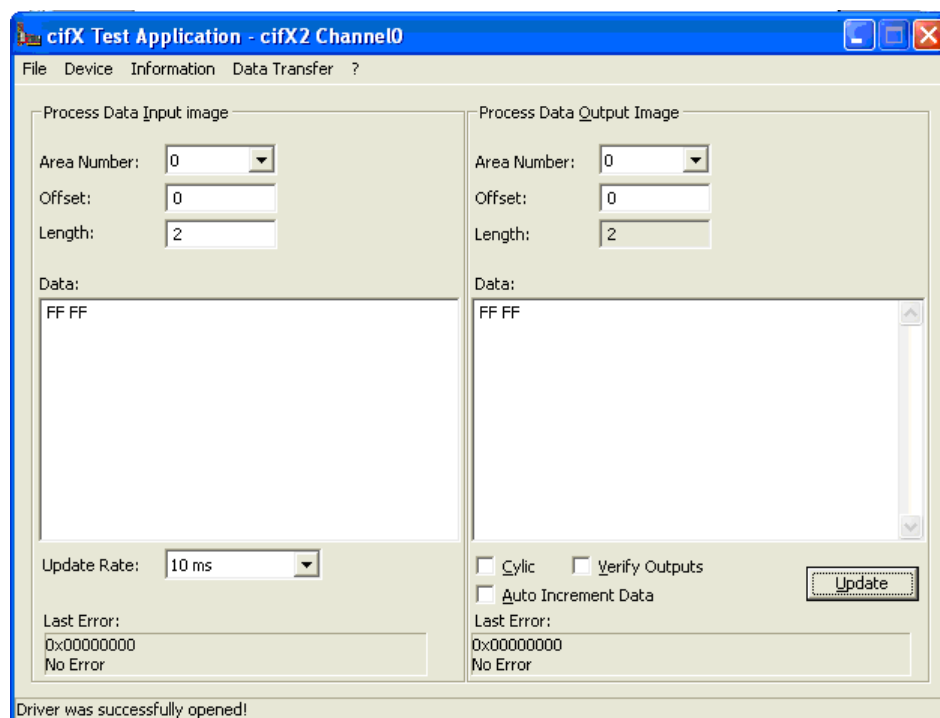
6. I/O data exchange.

- In the menu, choose **Data Transfer > I/O Data**.
- Set output data, e. g. FF FF, then click **Update**.
- Data is transferred to the CIFX RE/PNS and sent to the master via PROFINET network.
- Enter the length of the input data to be displayed in the cifX Test auxiliary tool, e. g. "2".
- Send data from the master (e. g. via I/O Monitor or cifX Test), then use the cifX Test auxiliary tool to watch the data incoming at the slave.



**Note:** Observe the data length. It must comply with the configuration.  
With the output data, you can try **cyclic** and **auto increment**.





## 5 Tips and Tricks

### 5.1 Checking, Setting and Reordering a License

1. Check license, reorder license and set license.
  - Right-click on the master device to open the context menu, then choose **Additional Functions > License**.

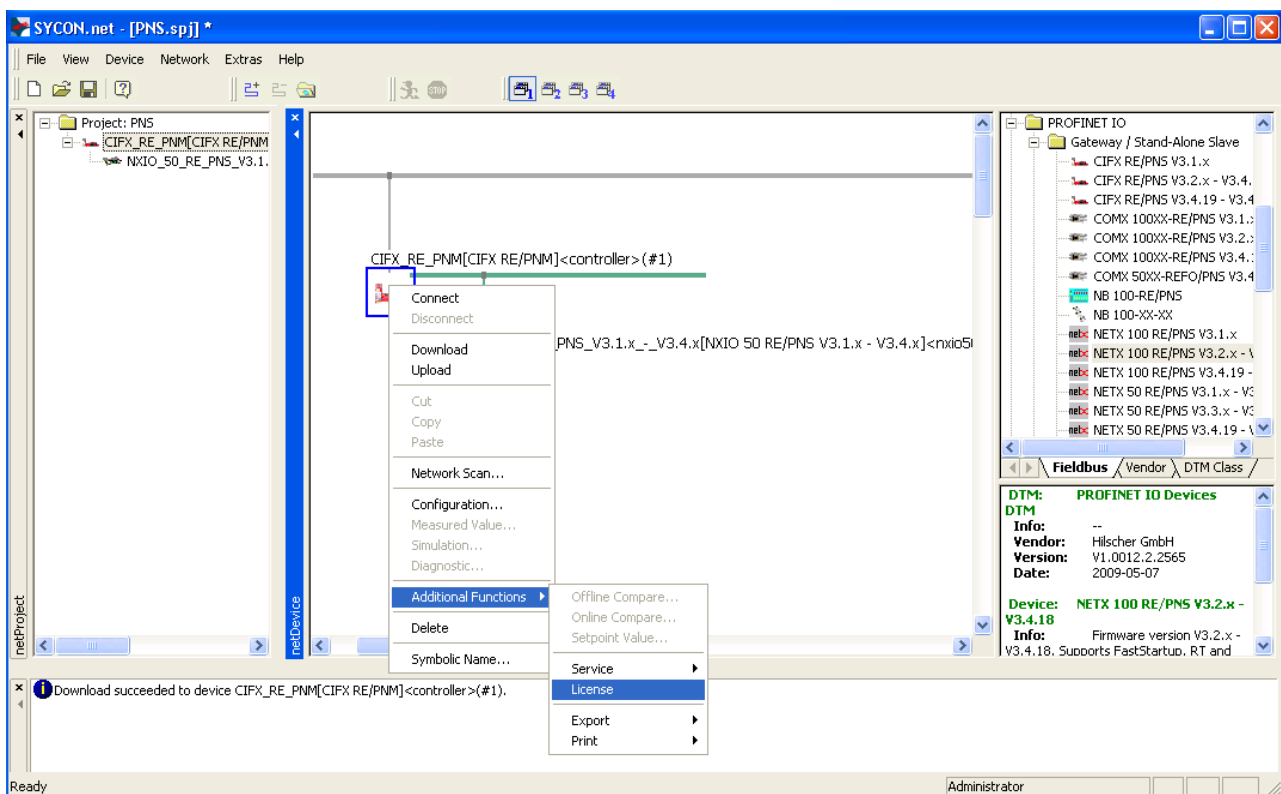


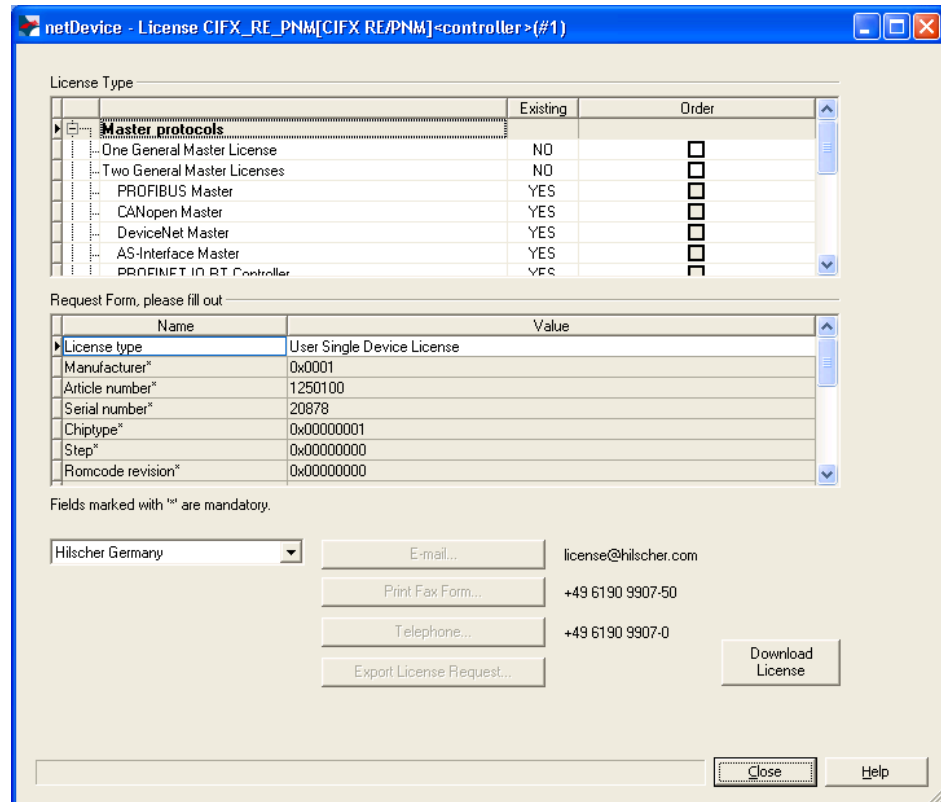
**Note:** To use this function, make sure that SYCON.net is **not** connected to the master for diagnostic purposes. You possibly have to disconnect. To do so, right-click on the master device to open the context menu, then choose **Disconnect**.



**Note:** Licenses can easily be reordered by simply exporting the filled-in form and handing it over to Hilscher, as if in an ordinary ordering process. Use the **Export License Request...** button for this.

A license is delivered as a license file with the ending **.nxi**. It can be transferred to the device from the same dialog sheet by clicking the **Download License** button.





## 5.2 Automated Scanning of the Network Structure

1. Let SYCON.net scan the network structure and create a device configuration automatically.
  - Right-click on the master device to open the context menu, then choose **Network Scan...**
  - Follow input prompt and configure details.
2. Finally, download the configuration to the Hilscher master device.
  - Right-click on the master device to open the context menu, then choose **Download**.



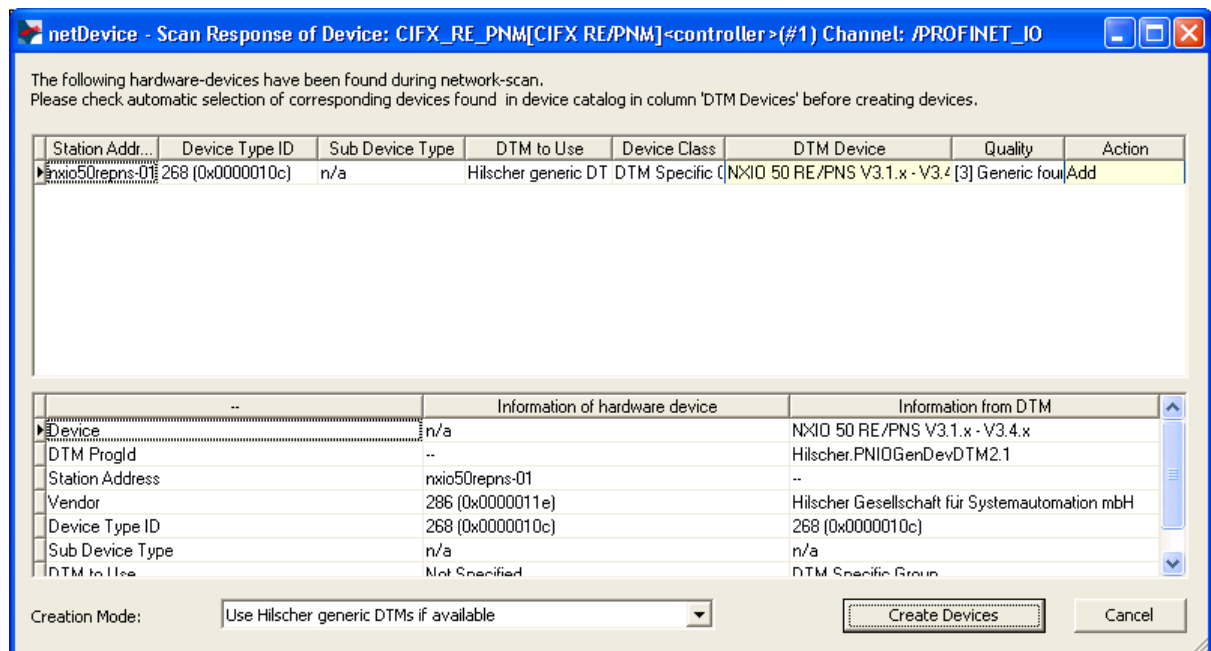
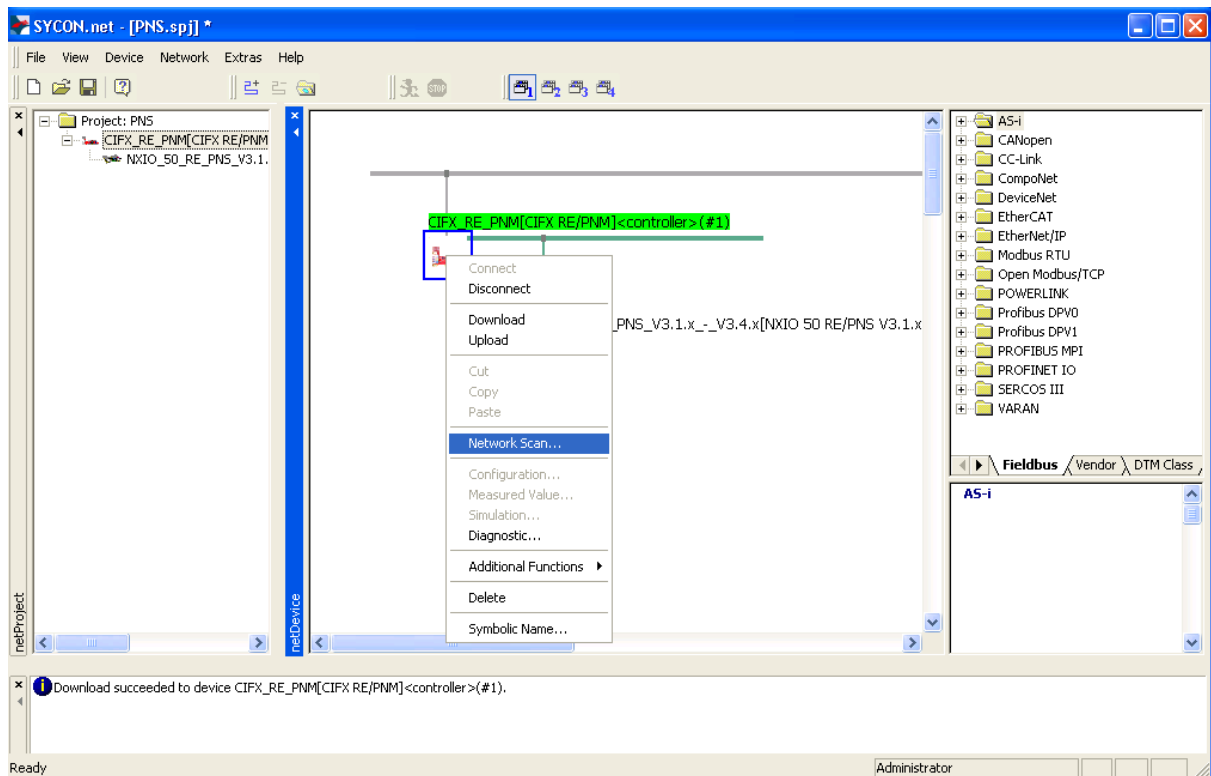
**Note:** Precondition for using the **Network Scan...** function is the assignment of hardware to the Hilscher master and the download of the corresponding firmware. Furthermore, the Hilscher master must contain a basic configuration.



**Note:** If a non-Hilscher slave device is used, first import in SYCON.net all necessary device description files.



**Note:** After having automatically created a configuration, the configuration still has to be downloaded to the Hilscher master.



## 5.3 Setting Station Name and IP Address of PROFINET Devices

### By using Hilscher PROFINET Controller in SYCON.net

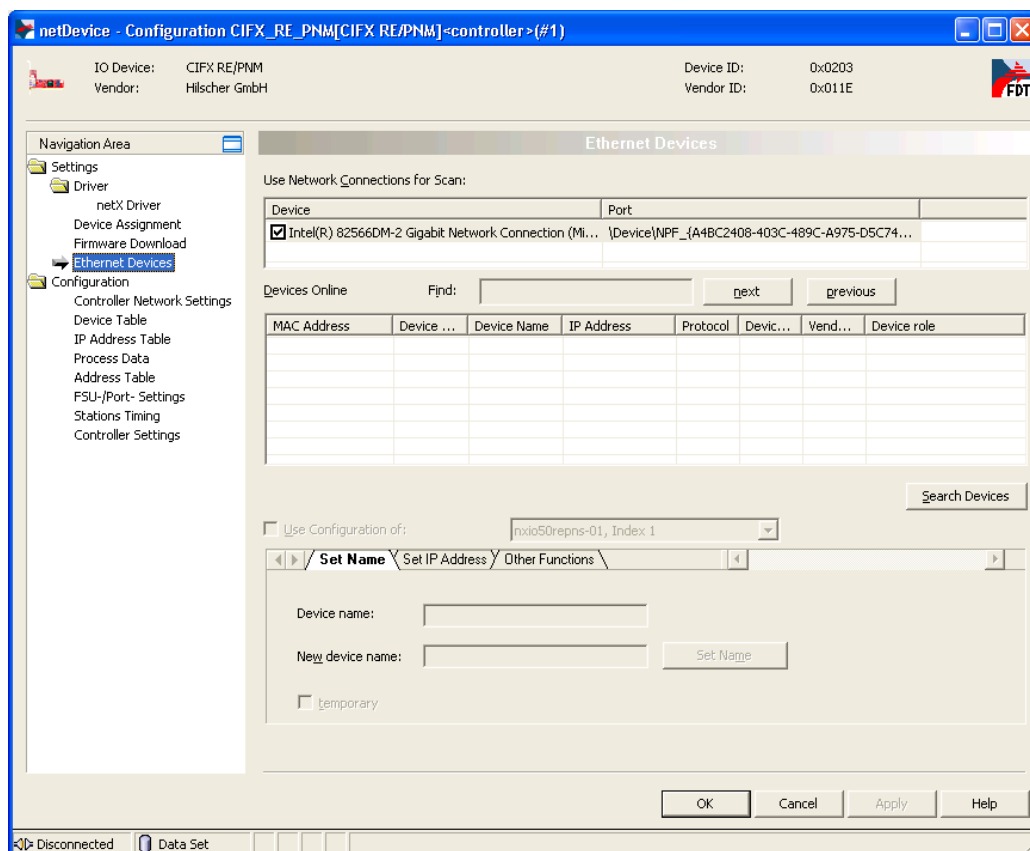
1. Open Configuration window for **CIFX RE/PNM** master.
  - Right-click on the master device to open the context menu, then choose **Configuration...**
  - In the **Navigation Area**, choose **Settings > Ethernet Devices**, then search for connected devices and set station names and IP addressing.

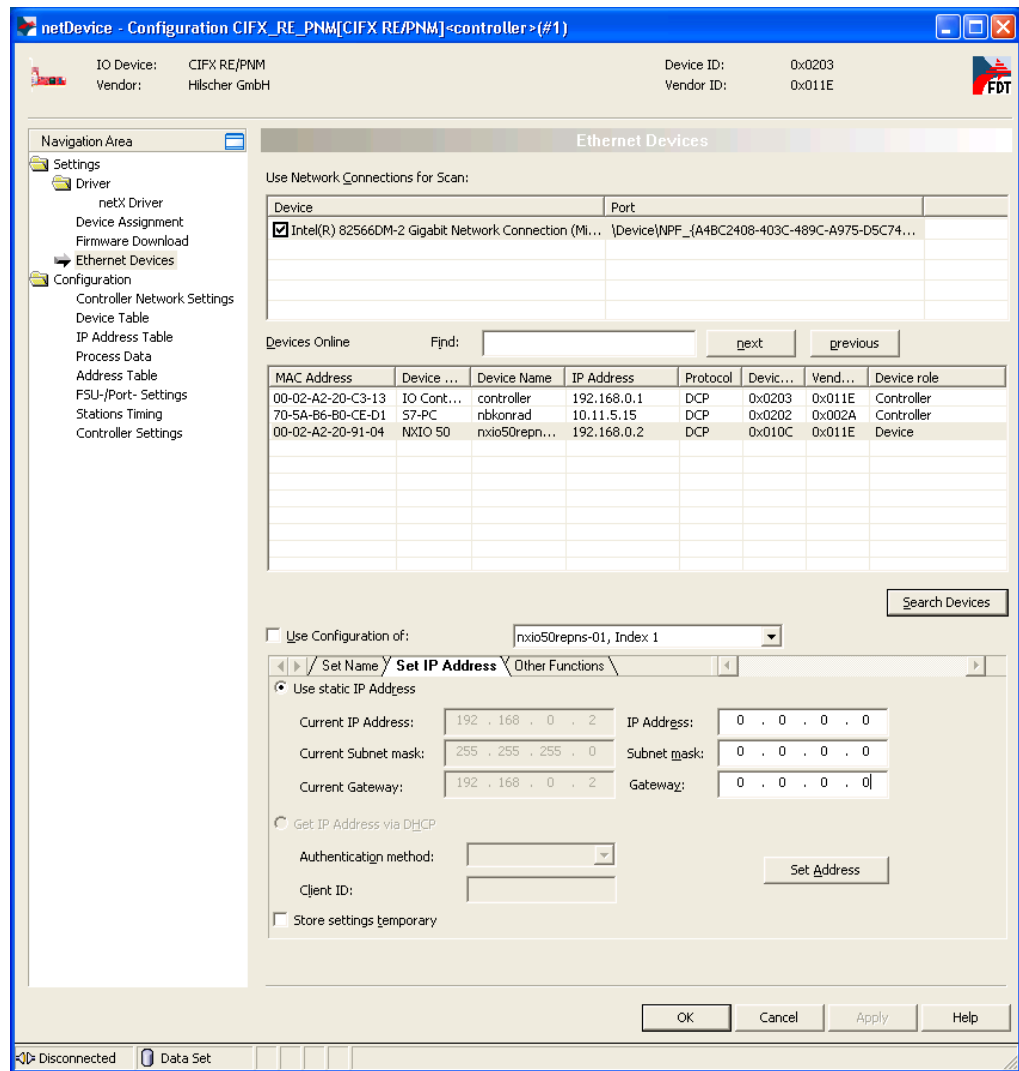


**Note:** For convenience, station name and IP addressing can be taken over from the configuration instead of entering the parameters manually.



**Note:** The Ethernet devices must be connected to their network adapter card via a suitable cable.



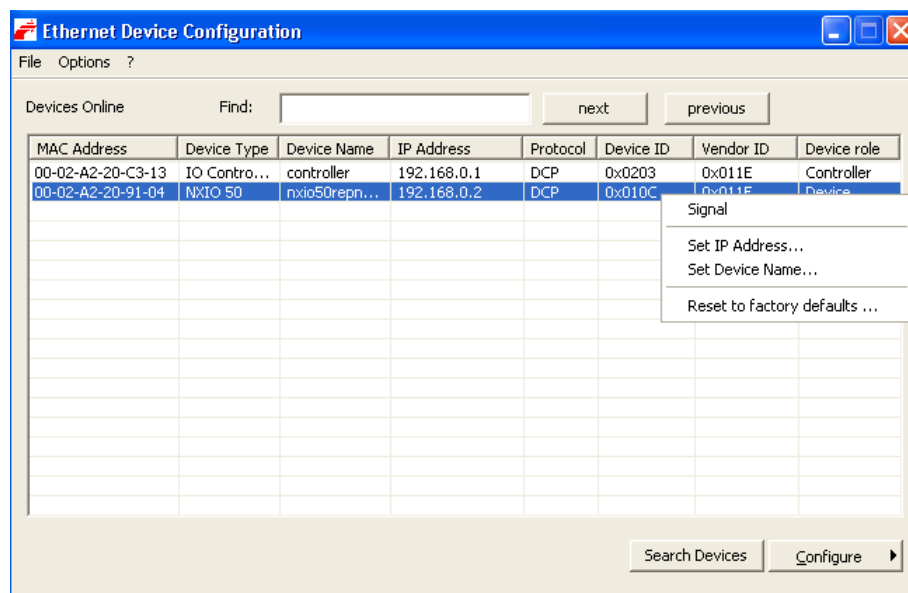
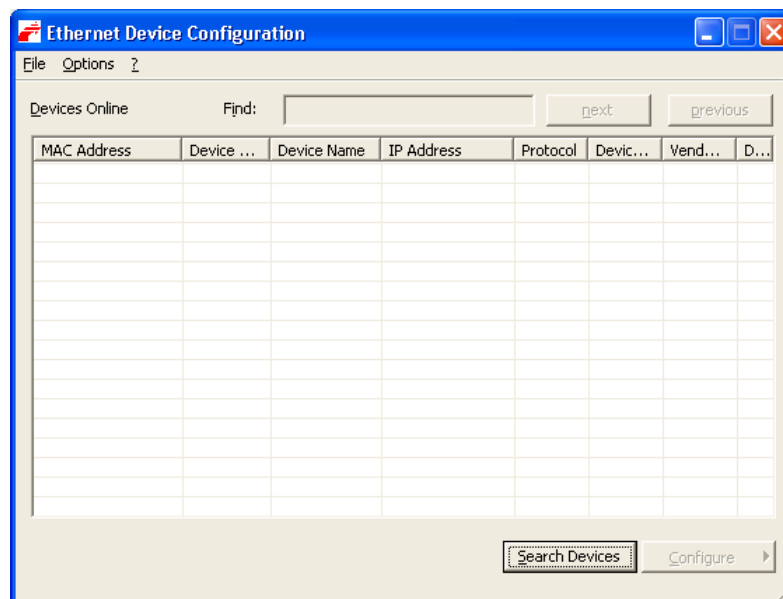


### By using Ethernet Device Configuration auxiliary tool

1. Start Ethernet Device Configuration.
  - In Windows, choose **Start > All Programs > SYCON.net System Configurator > Ethernet Device Setup**.
  - Click **Search Devices** button to scan for connected Ethernet devices, then set station names and IP addressing.



**Note:** The Ethernet devices must be connected to your network adapter card via a suitable cable.



**Note:** With the **Signal** option in the context menu, individual PROFINET devices can be identified by making one of their LEDs blink.

## 6 Contacts

### Headquarters

#### Germany

Hilscher Gesellschaft für  
Systemautomation mbH  
Rheinstrasse 15  
65795 Hattersheim  
Phone: +49 (0) 6190 9907-0  
Fax: +49 (0) 6190 9907-50  
E-Mail: [info@hilscher.com](mailto:info@hilscher.com)

#### Support

Phone: +49 (0) 6190 9907-99  
E-Mail: [de.support@hilscher.com](mailto:de.support@hilscher.com)

### Subsidiaries

#### China

Hilscher Systemautomation (Shanghai) Co. Ltd.  
200010 Shanghai  
Phone: +86 (0) 21-6355-5161  
E-Mail: [info@hilscher.cn](mailto:info@hilscher.cn)

#### Support

Phone: +86 (0) 21-6355-5161  
E-Mail: [cn.support@hilscher.com](mailto:cn.support@hilscher.com)

#### France

Hilscher France S.a.r.l.  
69500 Bron  
Phone: +33 (0) 4 72 37 98 40  
E-Mail: [info@hilscher.fr](mailto:info@hilscher.fr)

#### Support

Phone: +33 (0) 4 72 37 98 40  
E-Mail: [fr.support@hilscher.com](mailto:fr.support@hilscher.com)

#### India

Hilscher India Pvt. Ltd.  
New Delhi - 110 065  
Phone: +91 11 43055431  
E-Mail: [info@hilscher.in](mailto:info@hilscher.in)

#### Italy

Hilscher Italia S.r.l.  
20090 Vimodrone (MI)  
Phone: +39 02 25007068  
E-Mail: [info@hilscher.it](mailto:info@hilscher.it)

#### Support

Phone: +39 02 25007068  
E-Mail: [it.support@hilscher.com](mailto:it.support@hilscher.com)

#### Japan

Hilscher Japan KK  
Tokyo, 160-0022  
Phone: +81 (0) 3-5362-0521  
E-Mail: [info@hilscher.jp](mailto:info@hilscher.jp)

#### Support

Phone: +81 (0) 3-5362-0521  
E-Mail: [jp.support@hilscher.com](mailto:jp.support@hilscher.com)

#### Korea

Hilscher Korea Inc.  
Suwon, Gyeonggi, 443-734  
Phone: +82 (0) 31-695-5515  
E-Mail: [info@hilscher.kr](mailto:info@hilscher.kr)

#### Switzerland

Hilscher Swiss GmbH  
4500 Solothurn  
Phone: +41 (0) 32 623 6633  
E-Mail: [info@hilscher.ch](mailto:info@hilscher.ch)

#### Support

Phone: +49 (0) 6190 9907-99  
E-Mail: [ch.support@hilscher.com](mailto:ch.support@hilscher.com)

#### USA

Hilscher North America, Inc.  
Lisle, IL 60532  
Phone: +1 630-505-5301  
E-Mail: [info@hilscher.us](mailto:info@hilscher.us)

#### Support

Phone: +1 630-505-5301  
E-Mail: [us.support@hilscher.com](mailto:us.support@hilscher.com)